



HAZARDOUS AREA SOLUTIONS

atex@atexdelvalle.com | www.atexdelvalle.com

ATEX CONTROL WINDOWS IP66



Delvalle, wide experience in manufacturing solutions for hazardous area



WE PUT AT YOUR DISPOSAL

We offer over **45 years** providing hazardous area **solutions** to demanding customers who require very specific characteristics and behaviour according to the sector and their needs.

WHEREVER YOU GO

We are committed to working closely with our customers, providing them with exceptional service and offering an advanced and **extensive range of hazardous area products** with very competitive prices.

CONSULTING & ENGINEERING

Atex Delvalle adapts to our clients' needs by offering hazardous-area systems.
Certified Junction Box Assembly.
Atex-delvalle are the leading certified assembler of Ex junction boxes. With an extensive stock holding of stainless steel enclosures, our workshops are able to provide unrivalled competence, expertise, quality and service to customer specifications.
Our customized services, experienced design and drafting 3D support.

HIGH STANDARD OF QUALITY AND SERVICES

We only use materials provided by companies who offer the very highest quality, suitable and certified products. Our success is due to **top quality** assurance:
ISO 9001, SGS, UL, TÜV, ISO 14000, Ohsas 18001, ATEX, IECEx.



CONTACT US

Confidentiality, reliability & quality

www.atexdelvalle.com
atex@atexdelvalle.com
+34 945 601 381

ALSO ONLINE

Please contact our technical sales department.

A team of professionals with high experience and ability to solve all your queries.



**Zones 1, 2, 21 and 22**

ATEX CONTROL WINDOWS IP66



Examples



Shall Be Mounted Inside 'Ex e' and 'Ex d' Stainless Steel or GRP Enclosures

Atex Delvalle control windows made in GRP or polyamide, shall be mounted inside 'Ex e' and 'Ex d' stainless steel or GRP enclosures conform to Atex and IECEx certifications. They have high degree of protection up to IP66 for use in explosive atmospheres listed as Zones 1, 2, 21 and 22 and can be used in ambient temperature between -55°C to +80°C.



FOR MORE INFORMATION CLICK HERE

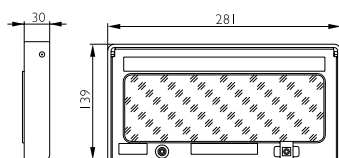


ATEX CONTROL WINDOWS IP66

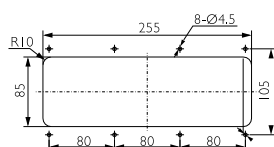
CERTIFICATES

- Certificates number:
 - CML I9ATEX330IU
 - IECEx CML I9.0086U
- Type protection:
 - II2GD Ex eb IIC Gb
 - Ex tb IIIC Db
- Ambient temperature:
 - $-55^{\circ}\text{C} < T_a < +80^{\circ}\text{C}$
- Standard:
 - EN IEC 60079-0:2018
 - EN IEC 60079-7:2015+A1:2018
 - EN 60079-31:2014
 - IEC 60079-0:2017
 - IEC 60079-31:2016
 - IEC 60079-7:2017

DVACC8002/1. OPERATION WINDOW FOR DISTRIBUTION BOX (281x139mm)



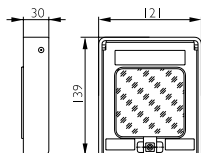
Outline dimensions



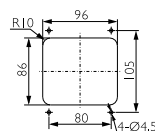
Hole size

REFERENCE	WEIGHT (kg)
DVACC8002/1	1.152

DVACC8002/2. OPERATION WINDOW FOR DISTRIBUTION BOX (121x139mm)



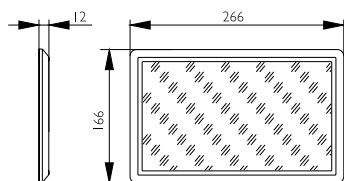
Outline dimensions



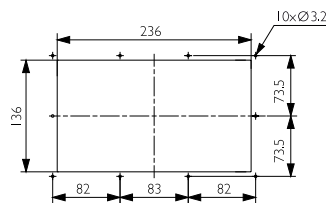
Hole size

REFERENCE	WEIGHT (kg)
DVACC8002/2	0.569

DVACC8007. TRANSPARENT GUARD FOR INSPECTION WINDOW INSTALLED ON THE COVER (266x166mm)



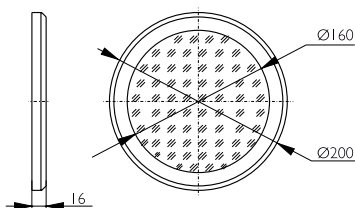
Outline dimensions



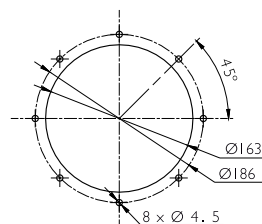
Hole size

REFERENCE	WEIGHT (kg)
DVACC8007	0.200

DVACC8032. INSPECTION WINDOW INSTALLED ON THE COVER (Ø200mm)



Outline dimensions



Hole size

REFERENCE	WEIGHT (kg)
DVACC8032	0.830

DELVALLE OFFERS OTHER SOLUTIONS ATEX & IECEx

➔ [CLICK HERE AND DISCOVER ALL SOLUTIONS](#)

ATEX TERMINAL BOXES **TERBOX SERIES**



EX LOCAL CONTROL & DISTRIBUTION BOXES **CONTREX SERIES**



PLUG AND SOCKET BOXES **CONNEX SERIES**



FLAMEPROOF CONNECTION BOXES **EJB SERIES**



EX LIGHTING FIXTURE **ATEX**



PRESSURIZED ENCLOSURE EX P **PEPPEX SERIES**



DELVALLE OFFERS OTHER SOLUTIONS ATEX & IECEx

➔ [CLICK HERE AND DISCOVER ALL SOLUTIONS](#)

EX CABLE GLANDS ATEX & IECEx



MOTOR AND SWITCH MACHINES ATEX & IECEx



EX PUSH BUTTON STATION CONTREX SERIES



INDUSTRIAL WORKSTATIONS & HMI'S ATEX



EX 19" RACK ATEX



HAZARDOUS WIRELESS & ANTENNA SYSTEMS ATEX





/ FLEXIBLE ATEX & IECEx SOLUTIONS



Paso del Prao, 6. 01320 Oyón (Álava), Spain
Telf. +34 945 601 381
www.atexdelvalle.com - atex@atexdelvalle.com

Contact us, we will be available at any time