



HAZARDOUS AREA SOLUTIONS

atex@atexdelvalle.com | www.atexdelvalle.com

SAFETY AND ISOLATION SWITCHES ATEX & IECEX



STAINLESS
ANTICORROSIVE



MECHANICAL
PARTS



Delvalle, wide experience in manufacturing solutions for hazardous area



WE PUT AT YOUR DISPOSAL

We offer over **45 years** providing hazardous area **solutions** to demanding customers who require very specific characteristics and behaviour according to the sector and their needs.

WHEREVER YOU GO

We are committed to working closely with our customers, providing them with exceptional service and offering an advanced and **extensive range of hazardous area products** with very competitive prices.

CONSULTING & ENGINEERING

Atex Delvalle adapts to our clients' needs by offering hazardous-area systems.
Certified Junction Box Assembly.
Atex-delvalle are the leading certified assembler of Ex junction boxes. With an extensive stock holding of stainless steel enclosures, our workshops are able to provide unrivalled competence, expertise, quality and service to customer specifications.
Our customized services, experienced design and drafting 3D support.

HIGH STANDARD OF QUALITY AND SERVICES

We only use materials provided by companies who offer the very highest quality, suitable and certified products. Our success is due to **top quality** assurance:
ISO 9001, SGS, UL, TÜV, ISO 14000, Ohsas 18001, ATEX, IECEx.



CONTACT US

Confidentiality, reliability & quality

www.atexdelvalle.com
atex@atexdelvalle.com
+34 945 601 381

ALSO ONLINE



Please contact our technical sales department.

A team of professionals with high experience and ability to solve all your queries.





Zones 1, 2, 21 and 22

SAFETY AND ISOLATION SWITCHES

ATEX & IECEx

Robust and Easy to Install



Example hinged closure (Luxorex)



Example screw closure (Geoex)

➔ [FOR MORE INFORMATION CLICK HERE](#)

The Ex safety and isolation switch, allows work with a machine to safely maintain, clean and overhaul it as long as the switch is in the OFF position.

It's made up of two components:

- The control component is a selector, which allows the current to go through the circuit or not. The ON position (1) allows the current, so blocks access to the machine through the mechanical blocker. The OFF position (0) blocks the current, to allow any work on the machine to be carried out.
- The isolation module allows the current to go through the circuit when the selector is in the ON position, and keep the current when the selector is in the OFF one.

This kind of switch is commonly used in any industry which uses machines, because the electrical circuits and tri-phase asynchronous motors need the energy supply and the installation kept separate, in places considered as potentially explosive, such as zones 1, 2, 21 and 22.

The switch is protected by a stainless steel AISI 316L enclosure, specifically designed, waterproof, antirust and with IP66 protection degree. It has a protection "Ex e" and "Ex d", which allows use in zones with a high explosion risk.

We have two types of closures:

- Screw closure (Geoex)
- Hinged closure (Luxorex)

CHARACTERISTICS

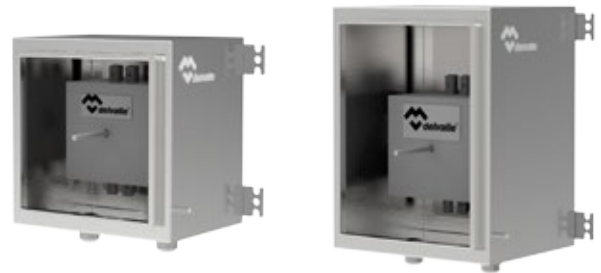
The Ex switch rated current is between 25 and 180A.

It can work between two temperature ranges, which give it a higher use capacity.

- $-20^{\circ}\text{C} \leq \text{Ta} \leq 60^{\circ}\text{C}$
- $-20^{\circ}\text{C} \leq \text{Ta} \leq 40^{\circ}\text{C}$

The Ex enclosure has:

- The joint between the cover and body, is designed to secure an IP66 degree protection.
- The selector has an IP65 degree protection.
- It's designed with stainless steel AISI 304L.
- It includes two cable glands with "Ex e" protection in either M25 nickel plated brass or in stainless steel.
- It has four wall brackets.
- It has "Ex e" and "Ex d" protection, for use in zones 1, 2, 21 and 22 with explosive atmospheres with dust and gas.



OPTIONS

- We have two types of closures:
 - Screw closure (Geoex)
 - Hinged closure (Luxorex)
- There are two kinds of Ex selector, one normal and the other an emergency selector, in red and yellow.
- Choice of poles between 3 poles, 3 poles + neutral, 4 poles and 6 poles.
- Possibility of including auxiliary contacts:
- Enclosure is made in AISI 316L stainless steel for marine or highly corrosive places.
- Ex cable glands available in any size and thread.

ADVANTAGES

- The enclosure can be manufactured in stainless steel 316L.
- It's a necessary device in order to carry out maintaining, cleaning or overhauling.
- It gives a total block.
- Enclosure is made in AISI 316L stainless steel for marine or highly corrosive places.

PROTECTION MODE

This equipment is certified for use in potentially explosive atmospheres in 1, 2, 21 and 22 zones and it has "Ex e" and "Ex d" (protection).

Atex mark:

- II2G Ex d e IICT6/T5 Gb
- II2D Ex tb IIIC T85°C /T100°C Db
- Certificate number: LOM14ATEX2082

- Certificate number: LOM 17ATEX1011

IECEX mark:

- Ex d e IICT6/T5 Gb
- Ex tb IIIC T85°C/T100°C Db
- Certificate number: EX/LOM/IECEX

NORMATIVE

Atex directive and regulation:

- Atex directive 2014/34/EU
- EN 60079-0:2012
- EN 60079-1:2007
- EN 60079-7:2015
- EN 60079-31:2010

IECEX regulation:

- IEC 60079-0:2011
- IEC 60079-1:2006

- IEC 60079-7:2015
- IEC 60079-31:2013

Enclosure regulation:

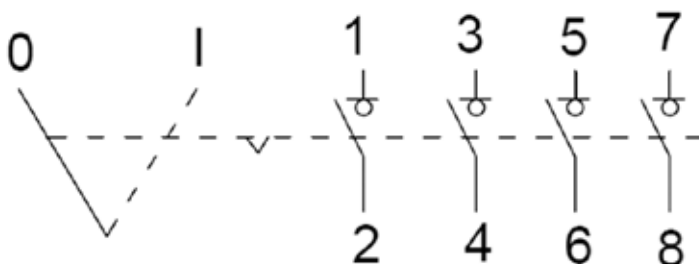
- IP regulation (IP65): IEC 60529-2004
- IK regulation (IK10): IEC 62262:2002

Low voltage directive and regulation:

- Directive 2014/35/EU
- EN 61439-1:2011
- EN 61439-2:2011

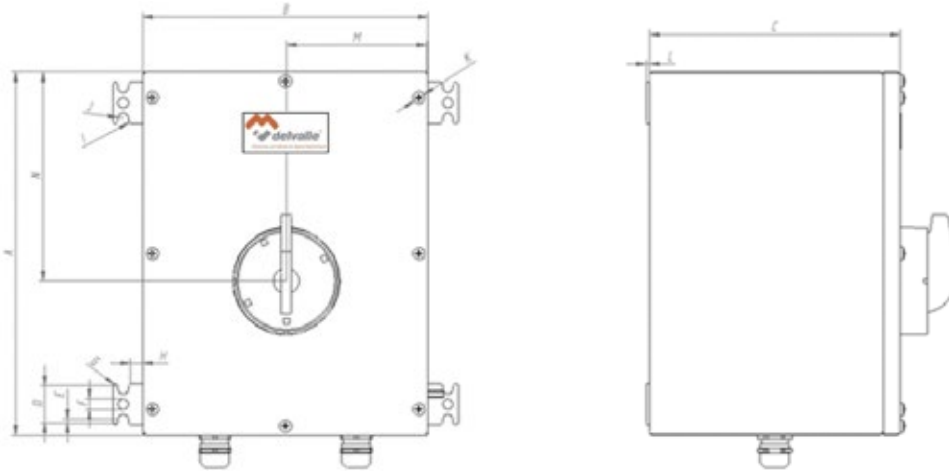
ELECTRICAL DIAGRAM

The electrical diagram is the following in case you have chosen four poles.



BLUEPRINT AND DIMENSIONS GEOEX

The planes are the same for all models, even if the measurements change.



STAINLESS
ANTICORROSIVE



MECHANICAL
PARTS

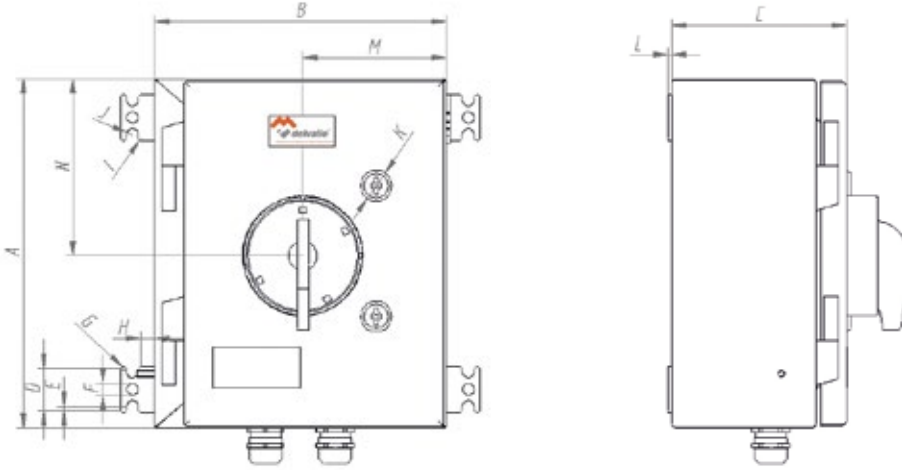
GEOEX - DIMENSIONS (mm)

25A														
	A	B	C	D	E	F	G	H	I	J	K	L	M	N
3P	175	150	110	36	3,5	D10	R2	12	R2	R5	D12	3	94	74
4P			110											
3P+N			110											
6P			150											
40A														
	A	B	C	D	E	F	G	H	I	J	K	L	M	N
3P	200	200	175	36	3,5	D10	R2	12	R2	R5	D12	3	100	112
4P			175											
3P+N			175											
6P			210											
80A														
	A	B	C	D	E	F	G	H	I	J	K	L	M	N
3P	250	250	200	36	3,5	D10	R2	12	R2	R5	D12	3	124	124
4P			200											
3P+N			200											
6P			240											
180A														
	A	B	C	D	E	F	G	H	I	J	K	L	M	N
3P	350	275	250	36	3,5	D10	R2	12	R2	R5	D12	3	136	201
4P			250											
3P+N			250											
6P			300											



BLUEPRINT AND DIMENSIONS LUXOREX

The planes are the same for all models, even if the measurements change.



10
YEARS
GUARANTEE
STAINLESS
ANTICORROSIVE

5
YEARS
GUARANTEE
MECHANICAL
PARTS

LUXOREX - DIMENSIONS (mm)

25A														
	A	B	C	D	E	F	G	H	I	J	K	L	M	N
3P	300	250	150	36	3,5	D10	R2	I2	R2	R5	D27	3	125	152
4P			150											
3P+N			150											
6P			200											
40A														
	A	B	C	D	E	F	G	H	I	J	K	L	M	N
3P	270	270	200	36	3,5	D10	R2	I2	R2	R5	D12	3	135	135
4P			200											
3P+N			200											
6P			250											
80A														
	A	B	C	D	E	F	G	H	I	J	K	L	M	N
3P	300	300	200	36	3,5	D10	R2	I2	R2	R5	D12	3	150	150
4P			200											
3P+N			200											
6P			250											
180A														
	A	B	C	D	E	F	G	H	I	J	K	L	M	N
3P	350	320	250	36	3,5	D10	R2	I2	R2	R5	D12	3	160	175
4P			250											
3P+N			250											
6P			300											



REFERENCES

This motor protection includes some different and as consequence of this we have created the next table to know the equipment's code.

TYPE	RATED CURRENT (A)	HANDLE'S COLOUR SWITCH	NUMBER OF POLES	AUXILIARY CONTACTS	EX
SSIS	To choose one	To choose between the black and red one	To choose between 3 poles, 3 poles + neutral, 4 poles and 6 poles	To choose one. In case of want nothing, not write	EX
	25 40 80 180	R N	3P 3PN 4P 6P	NONC 2NC 2NO NC NO	
Version Luxorex, with door		Add "P" to reference. Ex. "SSIS/25-R-4P-NONC-EX-P"			

EXAMPLE GEOEX

Switch Geoex with 25A rated current, handle in red colour, with 4 poles and one auxiliary contact normally open and another normally closed.

CODE

SSIS/25-R-4P-NONC-EX

EXAMPLE LUXOREX

Switch Luxorex with 40A rated current, handle in red colour, with 4 poles and one auxiliary contact normally open and another normally closed.

CODE

SSIS/40-R-4P-NONC-EX-P

DELVALLE OFFERS OTHER SOLUTIONS ATEX & IECEx

➔ [CLICK HERE AND DISCOVER ALL SOLUTIONS](#)

ATEX TERMINAL BOXES TERBOX SERIES



EX LOCAL CONTROL & DISTRIBUTION BOXES CONTREX SERIES



PLUG AND SOCKET BOXES CONNEX SERIES



FLAMEPROOF CONNECTION BOXES EJB SERIES



EX LIGHTING FIXTURE ATEX



PRESSURIZED ENCLOSURE EX P PEPPEX SERIES



DELVALLE OFFERS OTHER SOLUTIONS ATEX & IECEx

→ [CLICK HERE AND DISCOVER ALL SOLUTIONS](#)

EX CABLE GLANDS ATEX & IECEx



MOTOR AND SWITCH MACHINES ATEX & IECEx



EX PUSH BUTTON STATION CONTREX SERIES



INDUSTRIAL WORKSTATIONS & HMI'S ATEX



EX 19" RACK ATEX

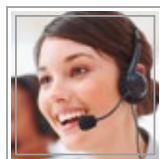


HAZARDOUS WIRELESS & ANTENNA SYSTEMS ATEX





/ FLEXIBLE ATEX & IECEX SOLUTIONS



Paso del Prao, 6. 01320 Oyón (Álava), Spain
Telf. +34 945 601 381
www.atexdelvalle.com - atex@atexdelvalle.com

Contact us, we will be available at any time