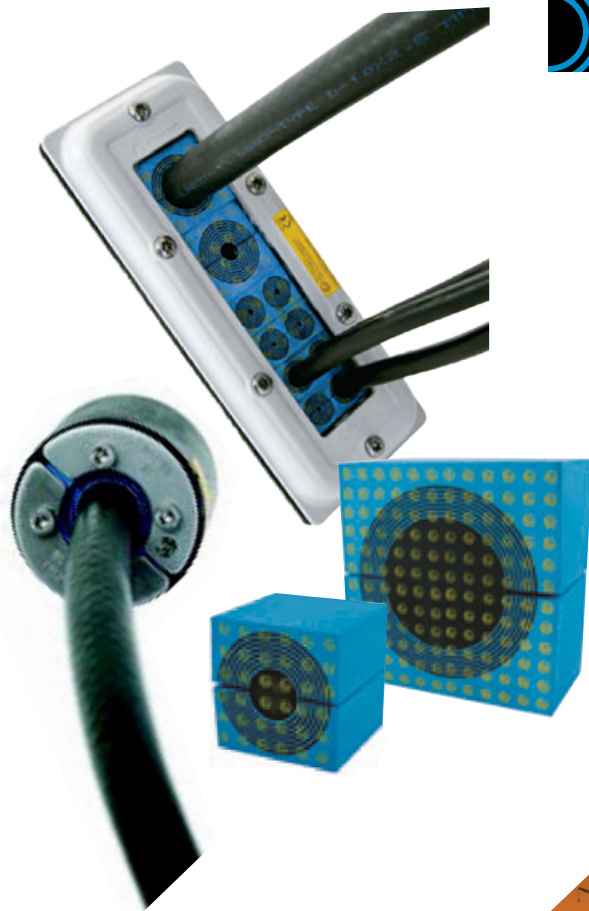
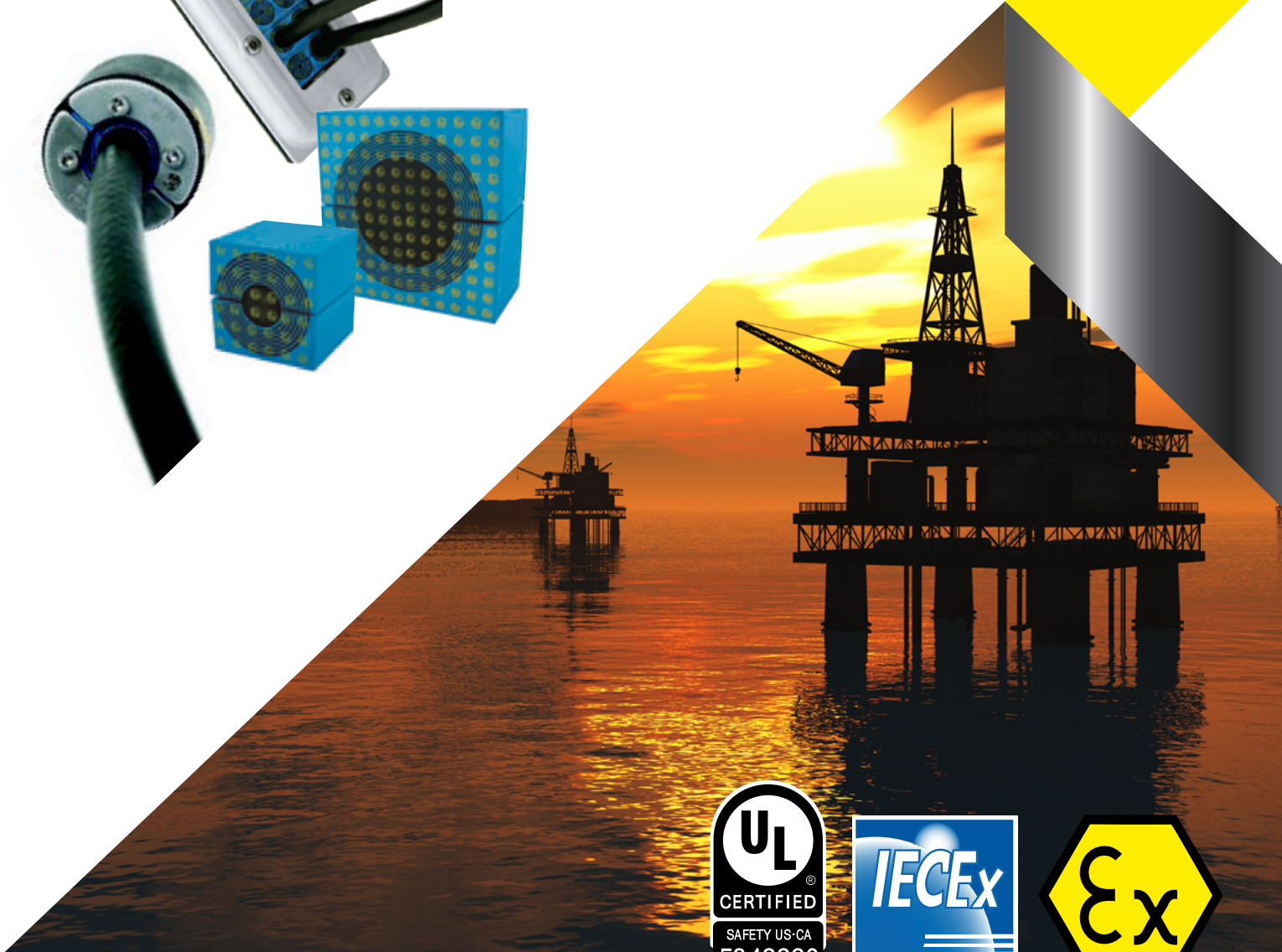




atex@atexdelvalle.com | www.atexdelvalle.com



# **Roxtec EX SEALING** System **Atex**



atex@atexdelvalle.com | www.atexdelvalle.com v. 1.0/16

# Delvalle, wide experience in manufacturing solutions for hazardous area



## WE PUT AT YOUR DISPOSAL

We offer **OVER 40 years** providing **solutions** to demanding customers who require very specific characteristics and behaviour according to the sector and their needs.

## WHEREVER YOU GO

We are committed to working closely with our customers, providing them with exceptional service and offering an advanced and extensive range of products with very competitive prices.

## CUSTOMIZE YOUR WIFI SYSTEM - WIRELESS

## HIGH STANDARD OF QUALITY AND SERVICES

We only use materials provided by companies who offer the very highest quality, suitable and certified products. Our success is due to **top quality** assurance: ISO 9001, SGS, UL, TÜV, ISO 14000 and Ohsas 18001. ATEX, IECEx a nivel mundial.

ALWAYS THINKING OUTSIDE THE BOX



## CONTACT US

Confidentiality, reliability & quality

atex@atexdelvalle.com  
+34 945 601 381

ALSO ONLINE

A team of professionals with high experience and ability to solve all your queries.





# Ex Sealing System Ex e y Ex tD

## DESCRIPTION

The Roxtec Ex cable sealing system is certified according to the ATEX directive and the IECEx, International Certification Scheme, for use in areas where explosive atmospheres are likely to occur. Roxtec Ex e products are designed to prevent ignition of explosive atmospheres. Typical applications are Ex e and/ or Ex tD classified electrical enclosures, such as transformers, motors, generators and junction boxes.



Example

## APPLICATIONS

- Petro-chemical and chemical industries
- Mills, concrete plants
- Spray booth plants
- OEM producers intending to supply to areas where the ATEX product directive applies.
- Silo works
- All other industries where areas have been zone classified according to marked areas in the chart below.



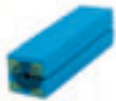
Frame R 100 B Ex Roxtec

Áreas	Classification of explosion risk	Labeling required for electrical equipment	
		Computer Group Category	Category
Mining	Operating	I	M1
Mining	Off	I	M2 o M1
No Mining	Zone 0	II	IG
No Mining	Zone 1	II	2G o IG
No Mining	Zone 2	II	3G, 2G o IG
No Mining	Zone 20	II	ID
No Mining	Zone 21	II	2D o ID
No Mining	Zone 22	II	3D, 2D o ID

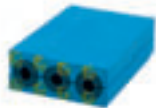


# Ex Sealing System

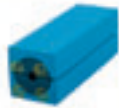
## RM Ex modules without core



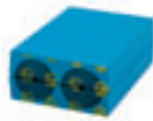
RM 15 Ex  
EXRM00100151000



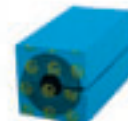
RM 15w40 Ex \*)  
EXRM00115401000



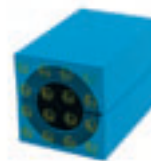
RM 20 Ex  
EXRM00100201000



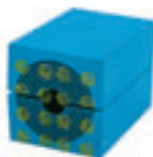
RM 20w40 Ex \*)  
EXRM00120401000



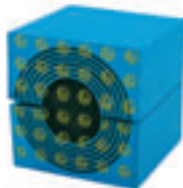
RM 30 Ex  
EXRM00100301000



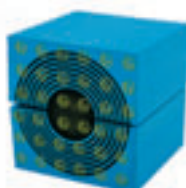
RM 40 Ex  
EXRM00100401000



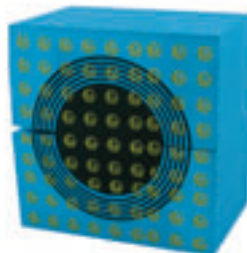
RM 40 10-32 Ex  
EXRM00140101000



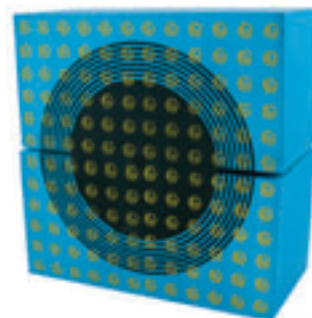
RM 60 Ex  
EXRM00100601000



RM 60 24-54 Ex  
EXRM00160201000



RM 90 Ex  
EXRM00100901000



RM 120 Ex  
EXRM00101201000

Module	Number of cables / pipes	For cable / pipe diameter $\varnothing_a - \varnothing_b$ (mm)   $\varnothing_a - \varnothing_b$ (In)		External dim. (mm) HxW (D=60 mm)
RM 15 Ex	1	0+3.0-11.0	0+0.118-0.433	15x15
RM 15w40 Ex *)	3	0+3.5-10.5	0+0.138-0.413	15x40
RM 20 Ex	1	0+4.0-14.5	0+0.157-0.571	20x20
RM 20w40 Ex *)	2	0+3.5-16.5	0+0.138-0.650	20x40
RM 30 Ex	1	0+10.0-25.0	0+0.394-0.984	30x30
RM 40 Ex	1	0+21.5-34.5	0+0.846-1.358	40x40
RM 40 10-32 Ex	1	0+9.5-32.5	0+0.374-1.280	40x40
RM 60 Ex	1	0+28.0-54.0	0+1.102-2.126	60x60
RM 60 24-54 Ex	1	0+24.0-54.0	0+0.945-2.126	60x60
RM 90 Ex	1	0+48.0-71.0	0+1.890-2.795	90x90
RM 120 Ex	1	0+67.5-99.0	0+2.657-3.898	120x120



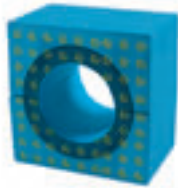


# Ex Sealing System

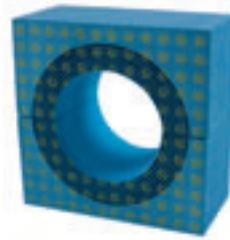
## RM Ex modules without core



RM 60 Ex woc  
EXRM00000601000

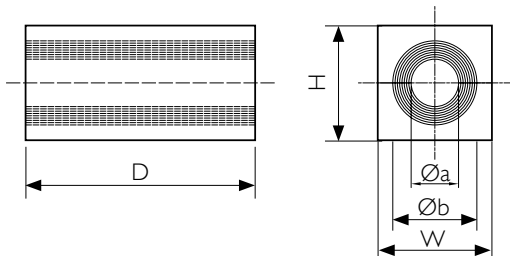


RM 90 Ex woc  
EXRM00000901000

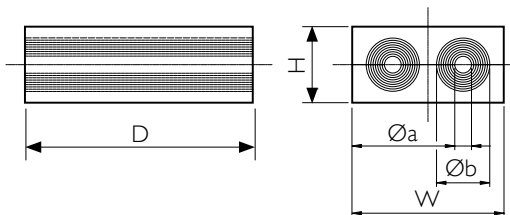


RM 120 Ex woc  
EXRM00001201000

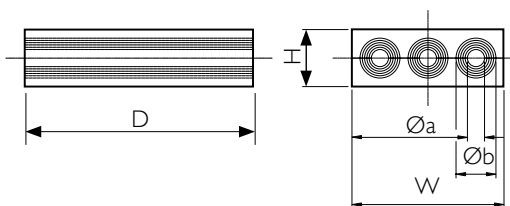
Module	Number of cables/pipes	for cable / pipe diameter $\varnothing_a - \varnothing_b$ (mm)   $\varnothing_a - \varnothing_b$ (in)		External dim. (mm) HxW (D=60 mm)
RM 60 Ex woc	1	28,0-54,0	1.102-2.126	60x60
RM 90 Ex woc	1	48,0-71,0	1.890-2.795	90x90
RM 120 Ex woc	1	67,5-99,0	2.657-3.898	120x120



Pos	
$\varnothing_a$	Min. cable/pipe diameter:
$\varnothing_b$	Max. cable/pipe diameter:
D	60 mm      2.362"



Note: All dimensions are nominal values



**We offer high reliability ATEX**



# Ex Sealing System

## Solid compensation modules Ex



RM 30/0 Ex  
EXRM00300301000

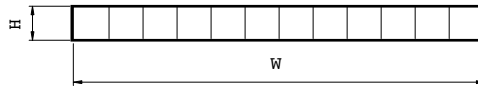
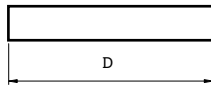


RM 5/0x24 Ex  
EXRM00305241000

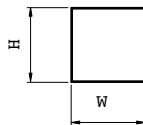
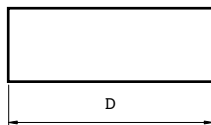
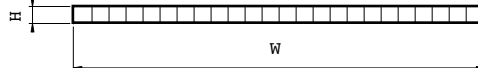
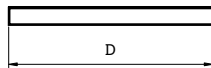


RM 10/0x12 Ex  
EXRM00310121000

Module	Weight		External dim. (mm) HxW (D=60 mm)
	(Kg)	(libras)	
RM 5/0x24 Ex	0.06	0.126	5x120
RM 10/0x 12 Ex	0.12	0.256	10x120
RM 15/0 Ex	0.02	0.049	15x15
RM 20/0 Ex	0.04	0.086	20x20
RM 30/0 Ex	0.08	0.179	30x30
RM 40/0 Ex	0.15	0.320	40x40
RM 60/0 Ex	0.33	0.719	60x60
RM 30H90/0 Ex*	0.24	0.537	90x30



Pos	(mm)	(in)
D	60	2.362"



Note: All dimensions are nominal values

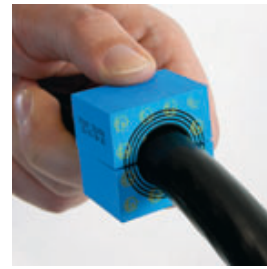
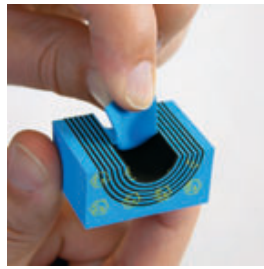
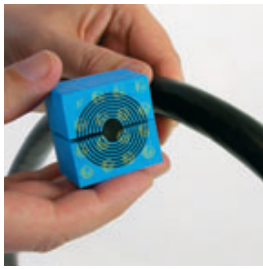


### SMART TIP

Consider using an RM module rather than a solid module. A Roxtec RM module installed with a solid centre core, serves the same purpose as a traditional solid module, plus it provides spare capacity for future installations.



# Ex Sealing System Roxtec CM Ex modules



## DESCRIPTION

Sealing modules for use with Roxtec Ex frames. The modules include Multidiameter™, the Roxtec technology based on removable layers, for perfect adaptation to different sizes of cables. When used with a solid core, the module functions as a spare module for future capacity.

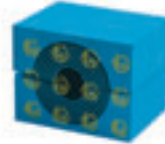
- For use with Group CM components
- Adaptable sealing modules for cables 3.5-32.5mm (0.138"-1.280") OD



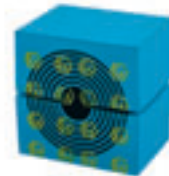
CM 15w40 Ex \*)  
EXC000115401000



CM 20w40 Ex \*)  
EXC000120401000



CM 30w40 Ex  
EXC000130401000



CM 40 10-32 Ex  
EXC000140101000

Módulo	Number of cables / pipes	For cable/pipe diameter Øa-Øb (mm)   Øa-Øb (in)		External dim. (mm) (HxW) (D=30 mm)	Weight (Kg)   (Lb)	
CM 15w40 Ex *)	3	0+ 3.5-10.5	0+ 0.138-0.413	15x40	0.02 - 0.03	0.044 - 0.055
CM 20w40 Ex *)	2	0+ 3.5-16.5	0+ 0.138-0.650	20x40	0.02 - 0.04	0.044 - 0.077
CM 30w40 Ex	1	0+ 10.0-25.0	0+ 0.394-0.984	30x40	0.04 - 0.06	0.077 - 0.121
CM 40 10-32 Ex	1	0+ 9.5-32.5	0+ 0.374-1.280	40x40	0.04 - 0.07	0.077 - 0.135

## SMART TIP

Whenever possible we recommend choosing twin or triplet modules like CM 15w40 Ex or CM 20w40 Ex. Benefits are an even higher area efficiency per frame opening, quicker installation and increased cost effectiveness.



Ex Sealing System

# CM Solid compensation modules Ex

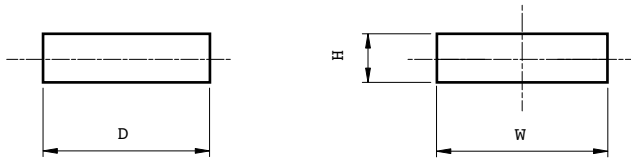


CM 5w40/0 Ex  
EXC000305401000



CM 10w40/0 Ex  
EXC000110401000

Module	External dim (mm) HxW (D=30 mm)	Weight (Kg) / (Lb)	
CM 5w40/0 Ex	5x40	0.01	0.022
CM 10w40/0 Ex	10x40	0.02	0.044



Pos	(mm)	(in)
D	30	1.181

Note: All dimensions are nominal values

## SMART TIP

Consider using an RM module rather than a solid module. A Roxtec RM module installed with a solid centre core, serves the same purpose as a traditional solid module, plus it provides spare capacity for future installations.







# Ex Sealing System

## S Ex



### DESCRIPTION

Roxtec S Ex frame is a metal frame available as a single opening, or in combinations with several openings in width and / or height.

- For use with Group RM components
- Attachment by welding



Example

### S Ex frames, primed, mild steel

S 6x1 Ex Primed  
EXS006000000112

Frame	N <sup>a</sup> de cables / tuberías	Espacio útil de sellado (mm)	Dim. externas (D=60 mm) HxW (mm)   HxW (pulgadas)		Weight (Kg)   (Lb)	
S 2x1 Ex primed	1	60 x 120	121 x 141	4.764 x 5.551	2.2	4.938
S 4x1 Ex primed	1	120 x 120	180 x 141	7.087 x 5.551	2.8	6.151
S 4x2 Ex primed	2	120 x 120	180 x 271	7.087 x 10.669	4.7	10.318
S 4x3 Ex primed	3	120 x 120	180 x 402	7.087 x 15.827	6.6	14.484
S 4x4 Ex primed	4	120 x 120	180 x 532	7.087 x 20.945	8.5	18.629
S 4x5 Ex primed	5	120 x 120	180 x 663	7.087 x 26.102	10.3	22.796
S 4+4x1 Ex primed	2	120x120	349x141	13.740x5.551	5.0	11.067
S 4+4x2 Ex primed	4	120x120	359x271	14.134x10.669	9.5	20.878
S 4+4x3 Ex primed	6	120x120	359x402	14.134x15.827	13.5	29.321
S 4+4x4 Ex primed	8	120x120	359x532	14.134x20.945	17.1	37.743
S 4+4+4x1 Ex primed	3	120x120	519x141	20.433x5.551	6.6	14.550
S 4+4+4x2 Ex primed	6	120x120	539x271	21.220x10.669	14.2	31.305
S 4+4+4x3 Ex primed	9	120x120	539x402	21.220x15.827	19.9	43.872
S 4+4+4x4 Ex primed	12	120x120	539x532	21.220x20.945	26.2	57.761
S 6x1 Ex primed	1	180 x 120	238 x 141	9.370 x 5.551	3.3	7.363
S 6x2 Ex primed	2	180 x 120	238 x 271	9.370 x 10.669	5.5	12.147
S 6x3 Ex primed	3	180 x 120	238 x 402	9.370 x 15.827	7.7	16.909
S 6x4 Ex primed	4	180 x 120	238 x 532	9.370 x 20.945	9.8	21.671
S 6x5 Ex primed	5	180 x 120	238 x 663	9.370 x 26.102	12.0	26.455
S 6+6+6x1 Ex primed	3	180 x 120	694x141	27.323x5.551	8.2	18.078
S 8x1 Ex primed	1	240 x 120	298 x 141	11.732 x 5.551	3.9	8.620
S 8x2 Ex primed	2	240 x 120	298 x 271	11.732 x 10.669	6.1	13.382
S 8x3 Ex primed	3	240 x 120	298 x 402	11.732 x 15.827	8.2	18.144
S 8x4 Ex primed	4	240 x 120	298 x 532	11.732 x 20.945	10.4	22.928
S 8x5 Ex primed	5	240 x 120	298 x 663	11.732 x 26.102	12.6	27.690
S 8+8x1 Ex primed	2	240 x 120	586x141	23.071x5.551	7.3	16.005
S 8+8x2 Ex primed	4	240 x 120	596x271	23.465x10.669	12.3	27.006
S 8+8x3 Ex primed	6	240 x 120	596x402	23.465x15.827	16.6	36.640
S 8+8x4 Ex primed	8	240 x 120	596x532	23.465x20.945	21.0	46.341
S 8+8+8x1 Ex primed	3	240x120	874x141	34.409x5.551	9.9	21.826



# Ex Sealing System

## S Ex

S Ex frames, acid proof stainless steel

Example



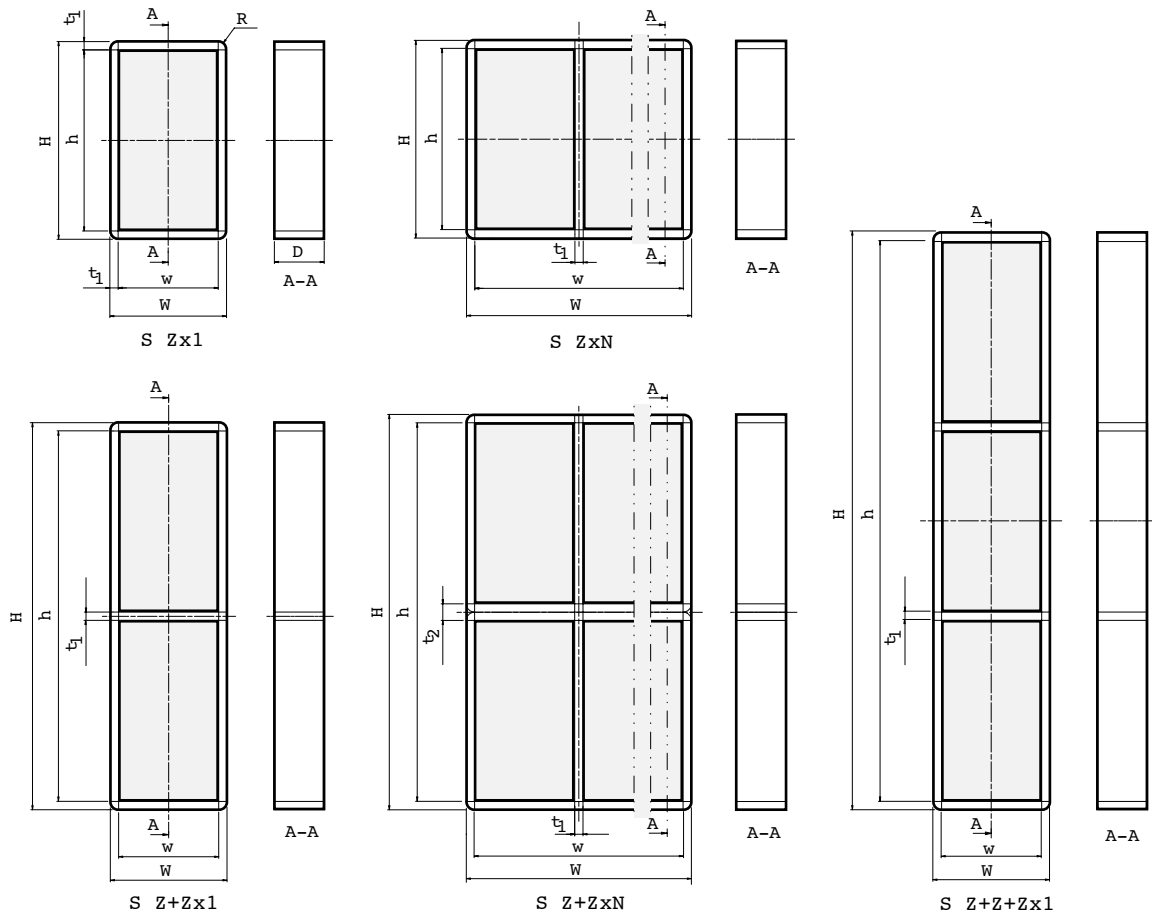
S 6x1 Ex AISI 316  
EXS006000000121

Frame	Frame Openings	Packing space (mm)	External dimensions (D=60 mm)		Weight (Kg)   (Lb)	
			HxW (mm)	HxW (pulgadas)		
S 2x1 Ex AISI 316	1	60 x 120	121 x 141	4.764 x 5.551	2.2	4.938
S 4x1 Ex AISI 316	1	120 x 120	180 x 141	7.087 x 5.551	2.8	6.151
S 4x2 Ex AISI 316	2	120 x 120	180 x 271	7.087 x 10.669	4.7	10.318
S 4x3 Ex AISI 316	3	120 x 120	180 x 402	7.087 x 15.827	6.6	14.484
S 4x4 Ex AISI 316	4	120 x 120	180 x 532	7.087 x 20.945	8.5	18.629
S 4x5 Ex AISI 316	5	120 x 120	180 x 663	7.087 x 26.102	10.3	22.796
S 4+4x1 Ex AISI 316	2	120x120	349x141	13.740x5.551	5.0	11.067
S 4+4x2 Ex AISI 316	3	120x120	359x271	20.433x5.551	6.6	14.550
S 6x1 Ex AISI 316	1	180x120	238x141	9.370 x 5.551	3.3	7.363
S 6x2 Ex AISI 316	2	180x120	238x271	9.370 x 10.669	5.5	12.147
S 6x3 Ex AISI 316	3	180x120	238x402	9.370 x 15.827	7.7	16.909
S 6x4 Ex AISI 316	4	180x120	238x538	9.370 x 20.945	9.8	21.671
S 6x5 Ex AISI 316	5	180x120	238x663	9.370 x 26.102	12.0	26.455
S 6+6x1 Ex AISI 316	2	180 x 120	466 x 141	18.346x5.551	6.1	13.492
S 6+6x2 Ex AISI 316	4	180 x 120	476 x 271	18.740x10.669	11.1	24.537
S 6+6x3 Ex AISI 316	6	180 x 120	476 x 402	18.740x15.827	15.5	34.171
S 6+6x4 Ex AISI 316	8	180 x 120	476 x 532	18.740x20.945	19.9	43.872
S 8x1 Ex AISI 316	1	240 x 120	298 x 141	11.732 x 5.551	3.9	8.620
S 8x2 Ex AISI 316	2	240 x 120	298 x 271	11.732 x 10.669	6.1	13.382
S 8x3 Ex AISI 316	3	240 x 120	298 x 402	11.732 x 15.827	8.2	18.144
S 8x4 Ex AISI 316	4	240 x 120	298 x 532	11.732 x 20.945	10.4	22.928
S 8x5 Ex AISI 316	5	240 x 120	298 x 663	11.732 x 26.102	12.6	27.690
S 8+8x1 Ex AISI 316	2	240 x 120	586x141	23.071x5.551	7.3	16.005
S 8+8+8x1 Ex AISI 316	3	240 x 120	874x141	34.409x5.551	9.9	21.826



# Ex Sealing System S Ex

## TECHNICAL INFORMATION



Note: All dimensions are nominal values

Z: Frame size

N: Number of horizontal openings

Pos	(mm)	(in)
h	H - 20	H - 0.787
w	W - 20	W - 0.787
D	60	2.362
t1	10	0.394
t2	20	0.787
R	R 10	R 0.394



# Ex Sealing System Marco SF..W Ex

## DESCRIPTION

Roxtec SF..W Ex frame is a metal frame with flange. Available as a single opening, or in combinations with several openings in width and / or height.

- For use with Group RM components
- Attachment by welding

Example



SF 6x1 W Ex primed  
EXSFF6000000112

Frame	Frame Openings	Packing space (mm)	External dimensions (D=60 mm)		Weight	
			HxW (mm)	HxW (pulgadas)	(Kg)	(Lb)
SF 2x1 W Ex primed	1	60 x 120	241 x 261	9.488 x 10.276	6.0	13.184
SF 4x1 W Ex primed	1	120 x 120	300 x 261	11.811 x 10.276	7.1	15.675
SF 4x2 W Ex primed	2	120 x 120	300 x 391	11.811 x 15.394	10.4	22.862
SF 4x3 W Ex primed	3	120 x 120	300 x 522	11.811 x 20.551	13.6	30.049
SF 4x4 W Ex primed	4	120 x 120	300 x 652	11.811 x 25.669	16.9	37.236
SF 4x5 W Ex primed	5	120 x 120	300 x 783	11.811 x 30.827	20.2	44.423
SF 4+4x1 W Ex primed	2	120x120	469 x 261	18.465x10.276	10.9	24.118
SF 4+4+4x1 W Ex primed	3	120x120	639 x 261	25.157x10.276	14.8	32.540
SF 6x1 W Ex primed	1	180x120	358 x 261	14.095 x 10.276	8.2	18.144
SF 6x2 W Ex primed	2	180x120	358 x 391	14.095 x 15.394	11.8	25.948
SF 6x3 W Ex primed	3	180x120	358 x 522	14.095 x 20.551	15.3	33.752
SF 6x4 W Ex primed	4	180x120	358 x 652	14.095 x 25.669	18.8	41.557
SF 6x5 W Ex primed	5	180x120	358 x 783	14.095 x 30.827	22.4	49.339
SF 6+6x1 W Ex primed	2	180 x 120	586x261	23.071x10.276	13.1	28.968
SF 6+6x2 W Ex primed	4	180 x 120	596x391	23.465x15.394	19.6	43.320
SF 6+6x3 W Ex primed	6	180 x 120	596x522	23.465x20.551	25.4	56.107
SF 6+6x4 W Ex primed	8	180 x 120	596x652	23.465x25.669	31.2	68.872
SF 6+6+6x1 W Ex primed	3	180 x 120	814x261	32.047x10.276	3.9	8.620
SF 8x1 W Ex primed	1	240 x 120	418 x 261	16.457 x 10.276	9.4	20.701
SF 8x2 W Ex primed	2	240 x 120	418 x 391	16.457 x 15.394	13.2	29.123
SF 8x3 W Ex primed	3	240 x 120	418 x 522	16.457 x 20.551	17.0	37.544
SF 8x4 W Ex primed	4	240 x 120	418 x 652	16.457 x 25.669	20.8	45.966
SF 8x5 W Ex primed	5	240 x 120	418 x 783	16.457 x 30.827	24.7	54.387
SF 8+8x1 W Ex primed	2	240 x 120	706 x 261	27.795x10.276	15.5	34.171
SF 8+8x2 W Ex primed	4	240 x 120	716 x 391	28.189x15.394	22.6	49.758
SF 8+8x3 W Ex primed	6	240 x 120	716x 522	28.189x20.551	28.9	63.779
SF 8+8x4 W Ex primed	8	240 x 120	716x 652	28.189x25.669	35.3	77.800



# Ex Sealing System Marco SF..W Ex

Marcos S Ex en acero inoxidable a prueba de ácidos

Example

SF 6x1 W Ex AISI 316  
EXSFF6000000121



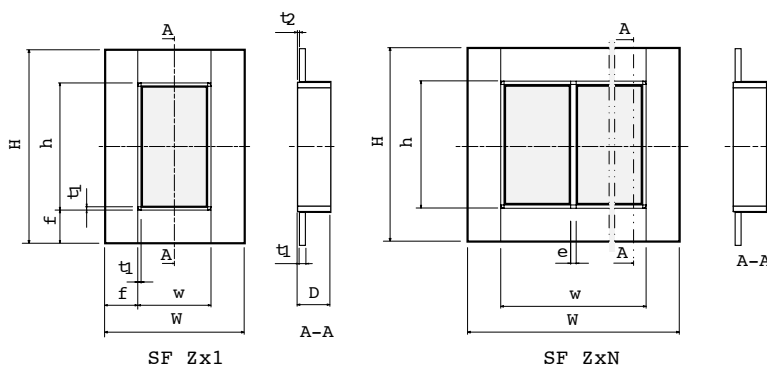
## INFORMACIÓN TÉCNICA

Frame	Frame openings	Packing space (mm)	External dimensions (D=65 mm)		Weight	
			HxW (mm)	HxW (pulgadas)	(Kg)	(Lb)
SF 2x1 W Ex primed	1	60 x 120	241 x 261	9.488 x 10.276	6.0	13.184
SF 4x1 W Ex primed	1	120 x 120	300 x 261	11.811 x 10.276	7.1	15.675
SF 4x2 W Ex primed	2	120 x 120	300 x 391	11.811 x 15.394	10.4	22.862
SF 4x3 W Ex primed	3	120 x 120	300 x 522	11.811 x 20.551	13.6	30.049
SF 4x4 W Ex primed	4	120 x 120	300 x 652	11.811 x 25.669	16.9	37.236
SF 4x1 W Ex primed	1	180x120	358 x 261	14.095 x 10.276	8.2	18.144
SF 4x2 W Ex primed	2	180x120	358 x 391	14.095 x 15.394	11.8	25.948
SF 4x3 W Ex primed	3	180x120	358 x 522	14.095 x 20.551	15.3	33.752
SF 4x4 W Ex primed	4	180x120	358 x 652	14.095 x 25.669	18.8	41.557
SF 6x1 W Ex primed	1	240x120	418 x 261	16.457 x 10.276	9.4	20.701
SF 6x2 W Ex primed	2	240x120	418 x 391	16.457 x 15.394	13.2	29.123
SF 6x3 W Ex primed	3	240x120	418 x 522	16.457 x 20.551	17.0	37.544
SF 6x4 W Ex primed	4	240x120	418 x 652	16.457 x 25.669	20.8	45.966

Note: All dimensions are nominal values

Z: Frame size

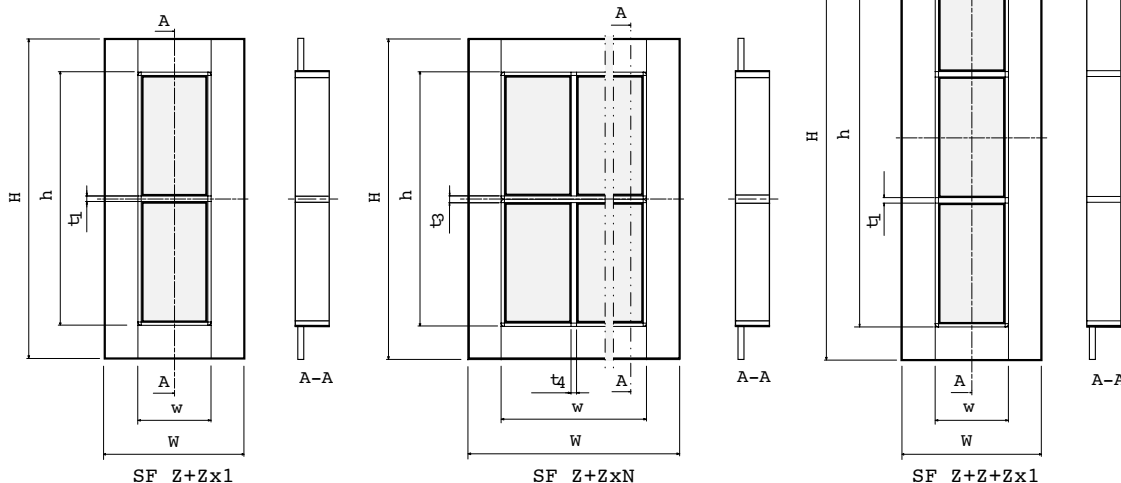
N: Number of horizontal openings



SF Zx1

SF ZxN

Pos	(mm)	(in)
h	H - 120	H - 4.724
w	W - 120	W - 4.724
D	60	2.362
f	60	2.362
t1	10	0.394
t2	3	0.118
t3	20	0.787



SF Z+Zx1

SF Z+ZxN

SF Z+Z+Zx1



# Ex Sealing System

## G Ex



### DESCRIPTION

The Roxtec G Ex is a flanged metal frame intended for bolting into place. The frame with its gasket is attached to the intended place by means of screws through pre-drilled holes (in the frame and the gasket).

Example



G 6x1 Ex primed  
EXG006000000112

Frame	Frames Openings	Packing space (mm)	External dimensions (D=60 mm)		Weight (Kg)   (Lb)	
			HxW (mm)	HxW (pulgadas)		
G 2x1 Ex primed	1	60 x 120	221 x 241	8.701 x 9.488	3.4	6.834
G 4x1 Ex primed	1	120 x 120	280 x 241	11.024 x 9.488	4.1	8.377
G 4x2 Ex primed	2	120 x 120	292 x 383	11.496 x 15.079	6.3	13.977
G 4x3 Ex primed	3	120 x 120	292 x 514	11.496 x 20.236	8.6	18.938
G 4x4 Ex primed	4	120 x 120	292 x 644	11.496 x 25.354	10.8	23.898
G 4x5 Ex primed	5	120 x 120	292 x 775	11.496 x 30.512	13.1	28.858
G 4+4x1 Ex primed	2	120 x 120	461 x 253	8.150x9.961	6.9	15.212
G 4+4x2 Ex primed	4	120 x 120	463 x 383	8.228x15.079	11.0	24.251
G 4+4x3 Ex primed	6	120 x 120	463 x 514	8.228x20.236	15.0	33.069
G 4+4x4 Ex primed	8	120 x 120	463 x 644	8.228x25.354	18.5	40.785
G 4+4+4x1 Ex primed	3	120 x 120	631 x 253	24.843x9.961	9.8	21.605
G 6x1 Ex primed	1	180 x 120	338 x 241	13.307 x 9.488	4.8	9.700
G 6x2 Ex primed	2	180 x 120	350 x 383	13.780 x 15.079	7.3	16.072
G 6x3 Ex primed	3	180 x 120	350 x 514	13.780 x 20.236	9.8	21.627
G 6x4 Ex primed	4	180 x 120	350 x 644	13.780 x 25.354	12.3	27.205
G 6x5 Ex primed	5	180 x 120	350 x 775	13.780 x 30.512	14.9	32.760
G 6+6x1 Ex primed	2	180x120	578x253	22.756x9.961	8.7	19.180
G 6+6x2 Ex primed	4	180x120	580x383	22.835x15.079	13.1	28.880
G 6+6x3 Ex primed	6	180x120	580x514	22.835x20.236	17.3	38.140
G 6+6x4 Ex primed	8	180x120	580x644	22.835x25.354	21.7	47.840
G 6+6x5 Ex primed	10	180x120	580x775	22.835x30.512	26.2	57.761
G 6+6+6x1 Ex primed	3	180x120	806x253	31.732x9.961	12.0	26.455
G 8x1 Ex primed	1	240 x 120	398 x 241	15.669 x 9.488	5.5	11.243
G 8x2 Ex primed	2	240 x 120	410 x 383	16.142 x 15.079	8.5	18.210
G 8x3 Ex primed	3	240 x 120	410 x 514	16.142 x 20.236	11.1	24.405
G 8x4 Ex primed	4	240 x 120	410 x 644	16.142 x 25.354	13.9	30.578



# Ex Sealing System G Ex

G Ex frames, galvanized, mild steel

Example  
G 6x1 Ex galv  
EXG006000000115



Frame	Frame openings	Packing space (mm)	External dimensions (D=60 mm)		Weight (Kg)   (Lb)	
			HxW (mm)	HxW (pulgadas)		
G 2x1 Ex galv	1	60 x 120	221 x 241	8.701 x 9.488	3.4	6.834
G 4x1 Ex galv	1	120 x 120	280 x 241	11.024 x 9.488	4.1	8.377
G 4x2 Ex galv	2	120 x 120	292 x 383	11.496 x 15.079	6.3	13.977
G 4x3 Ex galv	3	120 x 120	292 x 514	11.496 x 20.236	8.6	18.938
G 4x4 Ex galv	4	120 x 120	292 x 644	11.496 x 25.354	10.8	23.898
G 4x5 Ex galv	5	120 x 120	292 x 775	11.496 x 30.512	13.1	28.858
G 4+4x1 Ex galv	2	120 x 120	461 x 253	8.150x9.961	6.9	15.212
G 4+4+4x1 Ex galv	3	120 x 120	631 x 253	24.843x9.961	11.0	21.605
G 6x1 Ex galv	1	180 x 120	338 x 241	13.307 x 9.488	4.8	9.700
G 6x2 Ex galv	2	180 x 120	350 x 383	13.780 x 15.079	7.3	16.072
G 6x3 Ex galv	3	180 x 120	350 x 514	13.780 x 20.236	9.8	21.627
G 6x4 Ex galv	4	180 x 120	350 x 644	13.780 x 25.354	12.3	27.205
G 6x5 Ex galv	5	180 x 120	350 x 775	13.780 x 30.512	14.9	32.760
G 6+6x1 Ex galv	2	180 x 120	578 x 253	22.756 x 9.961	8.7	19.180
G 6+6+6x1 Ex galv	3	180 x 120	806 x 253	31.732 x 9.961	12.0	26.455
G 8x1 Ex galv	1	240 x 120	398 x 241	15.669 x 9.488	5.5	11.243
G 8x2 Ex galv	2	240 x 120	410 x 383	16.142 x 15.079	8.3	18.210
G 8x3 Ex galv	3	240 x 120	410 x 514	16.142 x 20.236	11.1	24.405
G 8x4 Ex galv	4	240 x 120	410 x 644	16.142 x 25.354	13.9	30.578



Marcos G Ex en acero inoxidable  
a prueba de ácidos

Example  
G 6x1 Ex AISI 316  
EXG006000000121



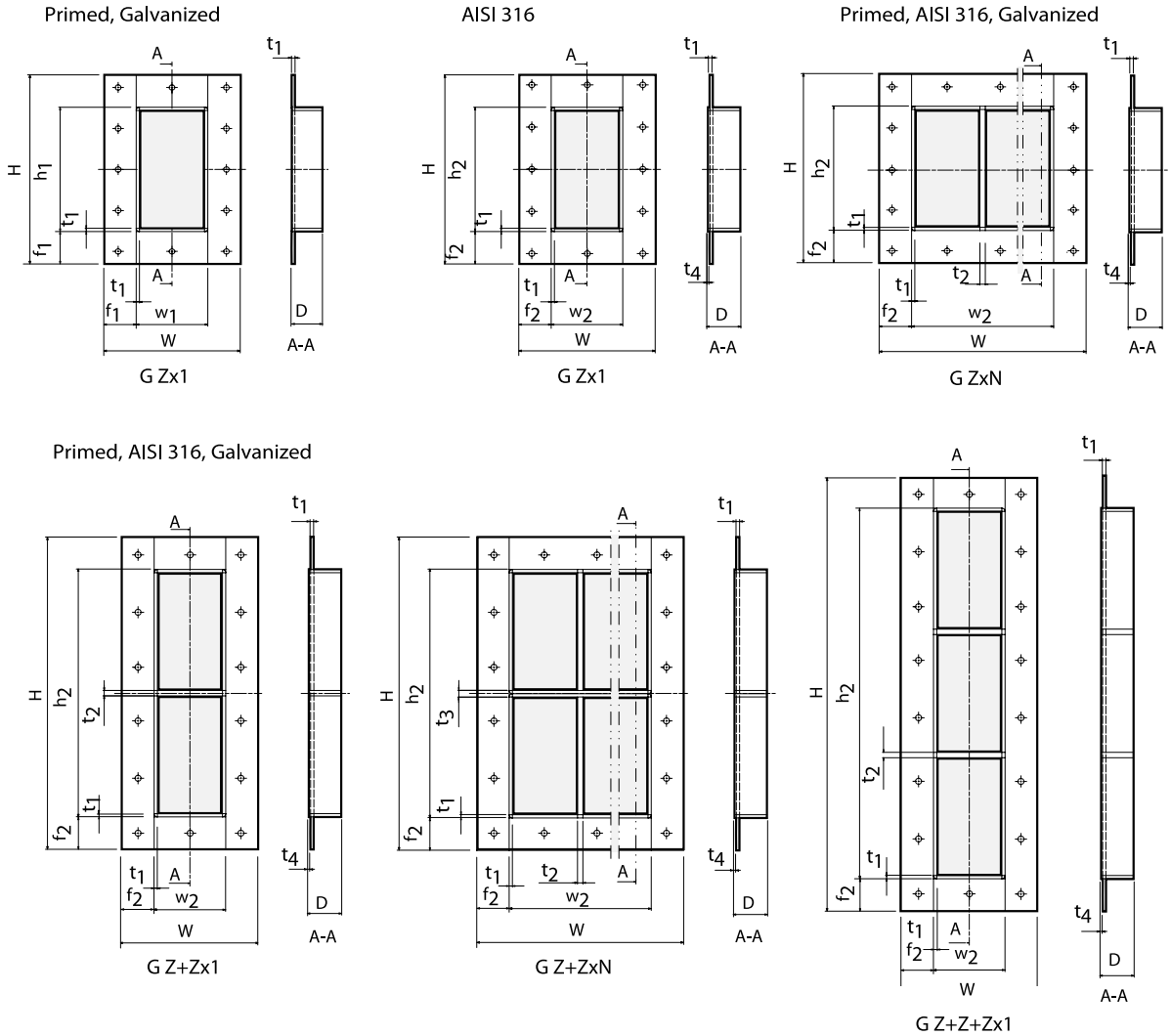
Frame	Frame openings	Packing space (mm)	External dimensions (D=60 mm)		Weight	
			HxW (mm)	HxW (pulgadas)	(Kg)	(Lb)
G 2x1 Ex AISI 316	1	60 x 120	233 x 253	9.173 x 9.961	3.4	7.562
G 4x1 Ex AISI 316	1	120 x 120	292 x 253	11.496 x 9.961	4.1	9.039
G 4x2 Ex AISI 316	2	120 x 120	292 x 383	11.496 x 15.079	6.3	13.977
G 4x3 Ex AISI 316	3	120 x 120	292 x 514	11.496 x 20.236	8.6	18.938
G 4x4 Ex AISI 316	4	120 x 120	292 x 644	11.496 x 25.354	10.8	23.898
G 6x1 Ex AISI 316	1	180 x 120	350 x 253	13.780 x 9.961	4.8	10.516
G 6x2 Ex AISI 316	2	180 x 120	350 x 383	13.780 x 15.079	7.3	16.072
G 6x3 Ex AISI 316	3	180 x 120	350 x 514	13.780 x 20.236	9.8	21.627
G 6x4 Ex AISI 316	4	180 x 120	350 x 644	13.780 x 25.354	12.4	27.205
G 8x1 Ex AISI 316	1	240 x 120	410 x 253	16.142 x 9.961	5.5	12.037
G 8x2 Ex AISI 316	2	240 x 120	410 x 383	16.142 x 15.079	8.3	18.210
G 8x3 Ex AISI 316	3	240 x 120	410 x 514	16.142 x 20.236	11.1	24.405
G 8x4 Ex AISI 316	4	240 x 120	410 x 644	16.142 x 25.354	13.9	30.578







# TECHNICAL INFORMATION



Pos	(mm)	(in)
h1	H - 108	H - 4.724
h2	H - 120	H - 4.724
w1	W - 108	W - 4.724
w2	W - 120	W - 4.724
D	60	2.362
f1	54	2.126
f2	60	2.362
t1	6	0.263
t2	10	0.394
t3	12	0.394
t4	3	0.118

Note: All dimensions are nominal values

Z: Frame size

N: Number of apertures horizontally



# Ex Sealing System CF 8 Ex/CF 32 Ex frames

## DESCRIPTION

The Roxtec CF 8 Ex and CF 32 Ex are cast aluminium frames suitable for compact installations in cabinets. The compression is integrated in the frame. CF 8 Ex can accommodate up to 15 cables and CF 32 Ex up to 60 cables.



Example

CF 8 Ex  
EXCSF0000080035



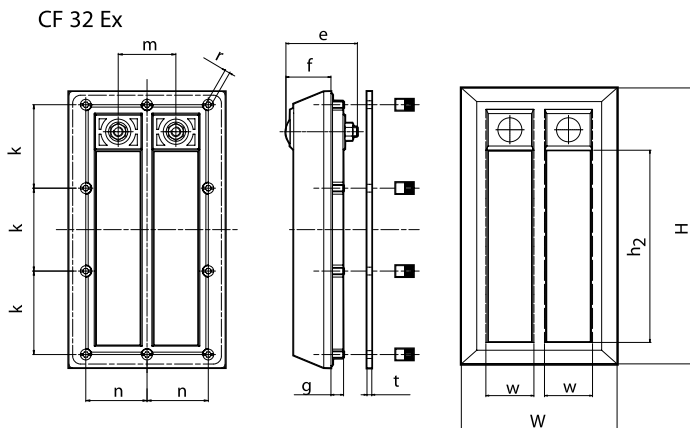
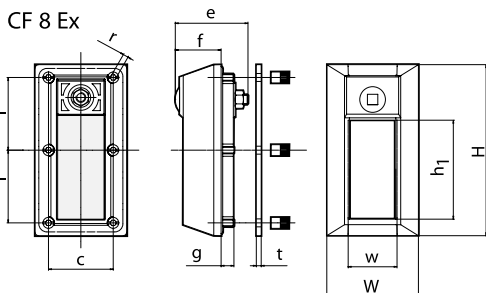
CF 32 Ex  
EXCSF0000320035



Frame	Frame openings	Packing space (mm)	External dimensions HxW (mm)   HxW (pulgadas)		Weight (Kg)   (Lb)	
CF 8 Ex	1	80 x 40	140 x 75	5.512 x 2.952	0.6	1.323
CF 32 Ex	2	160 x 40	230 x 130	9.055 x 5.118	1.4	3.086

Note: All dimensions are nominal values

Z: Frame size  
N: Number of apertures horizontally



Pos	(mm)	(in)
l	60	2.362
r	SW 4	SW 0.157
c	53	2.087
e	59	2.323
f	38	1.496
g	12	0.472
k	70	2.756
m	48	1.890
n	51	2.008
t	4	0.157
h1	80	3.150
h2	160	6.299
w	40	1.575



# Ex Sealing System CF 16 Ex

## DESCRIPTION

The CF 16 Ex frame has a very low profile and is suitable for enclosures where many cables need to be routed in areas with limited space. The CF 16 Ex has integrated compression and is ready to accommodate up to 30 cables.



Example



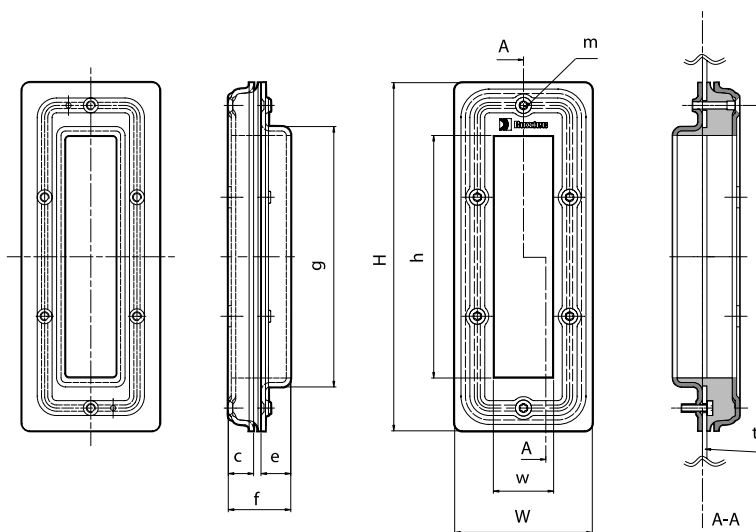
CF 16 Ex  
EXCSF0000160010



CF 16 Ex AISI 304  
EXCSF0001600021

Frame	Frame Openings	Packing space (mm)	External dimensions		Weight	
			HxW (mm)	HxW (pulgadas)	(Kg)	(Lb)
CF 16 Ex	1	160 x 40	234 x 93	9.213 x 3.661	1.4	3.086
CF 16 Ex AISI 304	1	160 x 40	234 x 93	9.213 x 3.661	1.2	2.646

Note: All dimensions are nominal values



Pos	(mm)	(in)
c	17	0.669
e	20	0.787
f	42	1.654
g	175	6.890
h	160	6.299
m	SW TX 25	SW TX 25
t	Max 4 mm	Max 0.157
w	40	1.575



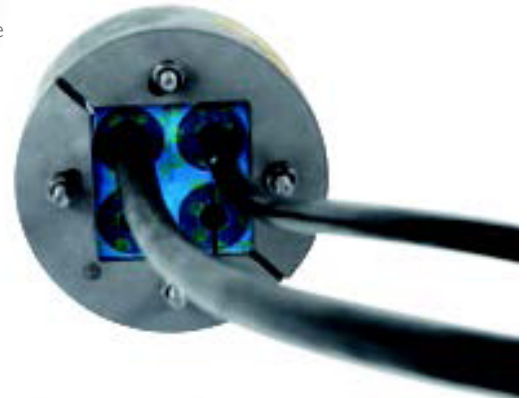
## DESCRIPTION

The Roxtec R Ex is a round expansion frame with a square packing space. The kit includes a sleeve. The sleeves are available in two versions intended for welding or bolting into place. Sleeves with flange has gasket included. The compression is integrated in the frame and is used together with RM Ex modules.

R Ex frames are supplied with a net installed (except R 75 Ex) on the back side as protection during horizontal installations.



Example



R 100 W Ex AISI 316/primed  
EXWR00001002112



R 100 W Ex AISI 316/AISI 316  
EXWR00001002112

Frame	Packing space (mm)	External dimensions (D=60 mm) HxW (mm)   HxW (In)		Sleeve SLR*	Weight (Kg)   (Lb)	
with primed mild steel sleeve						
R 75 W Ex AISI 316/primed	40 x 40	75 x 70	2.953 x 2.756	75	1.3	2.866
R 100 W Ex AISI 316/primed	60 x 60	100 x 70	3.937 x 3.346	100	1.7	3.748
R 125 W Ex AISI 316/primed	80 x 80	125 x 70	4.921 x 2.756	125	2.7	5.952
R 150 W Ex AISI 316/primed	90 x 90	150 x 70	5.906 x 2.756	150	3.5	7.716
R 200 W Ex AISI 316/primed	120 x 120	200 x 70	7.874 x 2.756	200	5.3	11.684
with primed mild steel sleeve						
R 75 W Ex AISI 316/AISI 316	40 x 40	75 x 70	2.953 x 2.756	75	4.8	2.866
R 100 W Ex AISI 316/AISI 316	60 x 60	100 x 70	3.937 x 3.346	100	7.3	3.748
R 125 W Ex AISI 316/AISI 316	80 x 80	125 x 70	4.921 x 2.756	125	9.8	5.952
R 150 W Ex AISI 316/AISI 316	90 x 90	150 x 70	5.906 x 2.756	150	12.4	7.716
R 200 W Ex AISI 316/AISI 316	120 x 120	200 x 70	7.874 x 2.756	200	5.5	11.684



# Ex Sealing System R Ex

R...B Ex including sleeve for bolting



Example

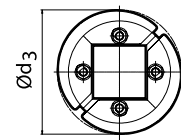
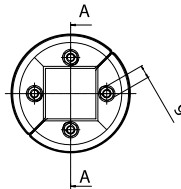
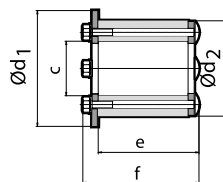
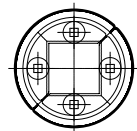


R 100 B Ex AISI 316/primed  
EXBR00001002112

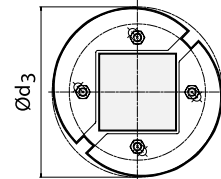
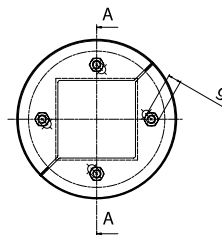
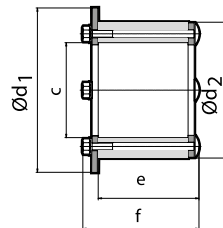
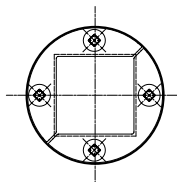
R 100 B Ex AISI 316/AISI 316  
EXBR00001002121

Frame	Packing space (mm)	External dimensions (D=60 mm) HxW (mm)   HxW (pulgadas)		Sleeve SLR*	Weight (Kg)   (Lb)	
with primed mild steel sleeve						
R 75 B Ex AISI 316/primed	40 x 40	75 x 70	2.953 x 2.756	75	1.8	3.968
R 100 B Ex AISI 316/primed	60 x 60	100 x 70	3.937 x 3.346	100	2.4	5.291
R 125 B Ex AISI 316/primed	80 x 80	125 x 70	4.921 x 2.756	125	3.5	7.716
R 150 B Ex AISI 316/primed	90 x 90	150 x 70	5.906 x 2.756	150	4.3	9.480
R 200 B Ex AISI 316/primed	120 x 120	200 x 70	7.874 x 2.756	200	6.4	14.110
with primed mild steel sleeve						
R 75 B Ex AISI 316/AISI 316	40 x 40	75 x 70	2.953 x 2.756	75	1.8	3.968
R 100 B Ex AISI 316/AISI 316	60 x 60	100 x 70	3.937 x 3.346	100	2.4	5.291
R 125 B Ex AISI 316/AISI 316	80 x 80	125 x 70	4.921 x 2.756	125	3.5	7.716
R 150 B Ex AISI 316/AISI 316	90 x 90	150 x 70	5.906 x 2.756	150	4.3	9.480
R 200 B Ex AISI 316/AISI 316	120 x 120	200 x 70	7.874 x 2.756	200	6.4	14.110

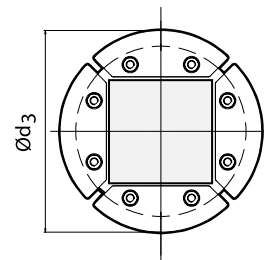
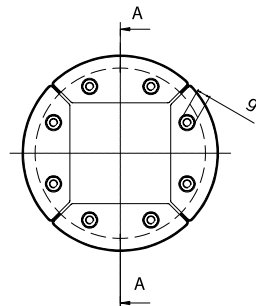
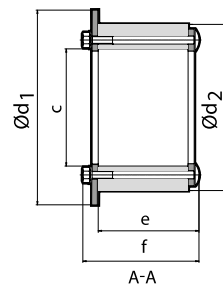
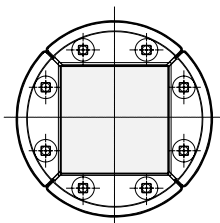
R 75 Ex



R 100 Ex



R 125 Ex / R 150 Ex / R 200 Ex A-A

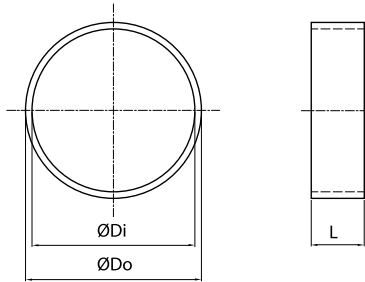




## Ex Sealing System R Ex

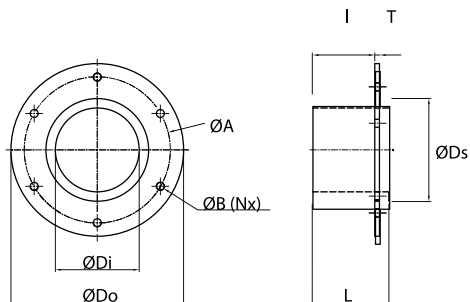
### Without flange

Primed mild steel. Acid proof AISI 316



	SLF 70		SLF 100		SLF 125		SLF 150		SLF 200	
Pos	(mm)	(in)	(mm)	(in)	(mm)	(in)	(mm)	(in)	(mm)	(in)
ØDo	89	3,504	114	4,488	140	5,512	164	6,457	214	8,425
ØDi	76,5	3,012	101	3,976	126	4,961	151	5,945	201	7,913
L	53	2,165	55	2,165	55	2,165	55	2,165	55	2,165

### With flange. Acid proof AISI 316



	SLFR 70		SLFR 100		SLFR 125		SLFR 150		SLFR 200	
Pos	(mm)	(in)	(mm)	(in)	(mm)	(in)	(mm)	(in)	(mm)	(in)
ØDo	160	6,288	195	7,677	213	5,512	236	9,291	290	11,417
ØDi	71,5	2,815	101	3,976	126	4,961	151	5,945	201	7,913
ØB	9	0,354	9	0,354	9	2,165	9	0,354	9	0,354
(Nx)	4x		6x		6x		6x		8x	
ØA	130	5,118	165	6,496	183	7,205	206	8,110	260	10,236
L	55	2,165	55	2,165	55	2,165	55	2,165	55	2,165
l	43	1,692	43	1,692	43	1,692	43	1,692	43	1,692
ØDs	83	3,268	114	4,488	140	5,512	164	6,457	214	8,425
T	4	0,157	4	0,157	4	0,157	4	0,157	4	0,157



# Ex Sealing System RS Ex

## DESCRIPTION

The Roxtec RS Ex is a round entry seal including a sleeve. The seal consists of two halves and an adaptable centre with removable layers. Compression is integrated in the seal.

- The sleeves are available in two design versions intended for welding or bolting into place.
- Available in EMC versions.



Example



### RS...W Ex including sleeve for welding



R 100 W Ex AISI 316 woc\*\*/primed  
EXRSW0100102112



RS 75 W Ex AISI 316/AISI 316  
EXRSW0750102121

Seal	For cable/pipe (mm)   (in)		External dimensions HxW (mm)   HxW (pulgadas)		Sleeve SLRS*	Weight (Kg)   (Lb)	
with primed mild steel sleeve							
RS 25 W Ex AISI 316/primed	0+3.6-12	0+0.142-0.472	25 x 40	0.984 x 1.575	25	0.1	0.306
RS 43 W Ex AISI 316/primed	0+4-23	0+0.157-0.906	43 x 78	1.693 x 3.071	43	0.5	1.203
RS 50 W Ex AISI 316/primed	0+8-30	0+0.315-1.181	50 x 78	1.969 x 3.071	50	0.8	1.840
RS 75 W Ex AISI 316/primed	0+26-48	0+1.024-1.890	75 x 78	2.953 x 3.071	75	1.5	3.359
RS 100 W Ex AISI 316 woc**/primed	48-70	1.890-2.756	100 x 83	3.937 x 3.268	100	2.0	4.504
RS 125 W Ex AISI 316 woc**/primed	66-98	2.598-3.858	125 x 83	4.921 x 3.268	125	2.7	6.025
RS 150 W Ex AISI 316 woc**/primed	93-119	3.661-4.685	150 x 85	5.906 x 3.346	150	3.2	7.012
with primed mild steel sleeve							
RS 25 W Ex AISI 316/AISI 316	0+3.6-12	0+0.142-0.472	25 x 40	0.984 x 1.575	25	0.1	0.306
RS 43 W Ex AISI 316/AISI 316	0+4-23	0+0.157-0.906	43 x 78	1.693 x 3.071	43	0.5	1.203
RS 50 W Ex AISI 316/AISI 316	0+8-30	0+0.315-1.181	50 x 78	1.969 x 3.071	50	0.8	1.840
RS 75 W Ex AISI 316/AISI 316	0+26-48	0+1.024-1.890	75 x 78	2.953 x 3.071	75	1.5	3.359
RS 100 W Ex AISI 316 woc**/AISI 316	48-70	1.890-2.756	100 x 83	3.937 x 3.268	100	2.0	4.504
RS 125 W Ex AISI 316 woc**/AISI 316	66-98	2.598-3.858	125 x 83	4.921 x 3.268	125	2.7	6.025
RS 150 W Ex AISI 316 woc**/AISI 316	93-119	3.661-4.685	150 x 85	5.906 x 3.346	150	3.2	7.012



# Ex Sealing System

## RS Ex

RS...B Ex including sleeve for bolting



R 100 B Ex AISI 316 woc\*\*/primed  
EXRSB0100102112



RS 75 B Ex AISI 316/AISI 316  
EXRSB0750002121

Seal	For cable/pipe (mm)   (in)		External dimensions ØxD (mm)   ØxD (in)		Sleeve SLFRS*	Weight (Kg)   (Lb)	
with primed mild steel sleeve							
RS 25 B Ex AISI 316/primed	0+3.6-12	0+0.142-0.472	25 × 40	0.984 × 1.575	25	0.1	0.306
RS 43 B Ex AISI 316/primed	0+4-23	0+0.157-0.906	43 × 78	1.693 × 3.071	43	0.5	1.203
RS 50 B Ex AISI 316/primed	0+8-30	0+0.315-1.181	50 × 78	1.969 × 3.071	50	0.8	1.840
RS 75 B Ex AISI 316/primed	0+26-48	0+1.024-1.890	75 × 78	2.953 × 3.071	75	1.5	3.359
RS 100 B Ex AISI 316 woc**/primed	48-70	1.890-2.756	100 × 83	3.937 × 3.268	100	2.0	4.504
RS 125 B Ex AISI 316 woc**/primed	66-98	2.598-3.858	125 × 83	4.921 × 3.268	125	2.7	6.025
RS 150 B Ex AISI 316 woc**/primed	93-119	3.661-4.685	150 × 85	5.906 × 3.346	150	3.2	7.012
With primed mild steel sleeve							
RS 25 B Ex AISI 316/AISI 316	0+3.6-12	0+0.142-0.472	25 × 40	0.984 × 1.575	25	0.1	0.306
RS 43 B Ex AISI 316/AISI 316	0+4-23	0+0.157-0.906	43 × 78	1.693 × 3.071	43	0.5	1.203
RS 50 B Ex AISI 316/AISI 316	0+8-30	0+0.315-1.181	50 × 78	1.969 × 3.071	50	0.8	1.840
RS 75 B Ex AISI 316/AISI 316	0+26-48	0+1.024-1.890	75 × 78	2.953 × 3.071	75	1.5	3.359
RS 100 B Ex AISI 316 woc**/AISI 316	48-70	1.890-2.756	100 × 83	3.937 × 3.268	100	2.0	4.504
RS 125 B Ex AISI 316 woc**/AISI 316	66-98	2.598-3.858	125 × 83	4.921 × 3.268	125	2.7	6.025
RS 150 B Ex AISI 316 woc**/AISI 316	93-119	3.661-4.685	150 × 85	5.906 × 3.346	150	3.2	7.012

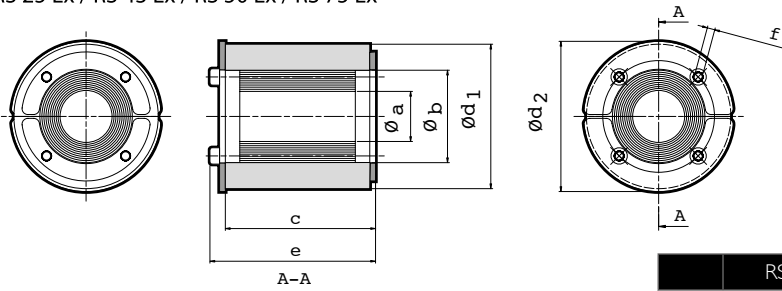






# Ex Sealing System RS Ex

RS 25 Ex / RS 43 Ex / RS 50 Ex / RS 75 Ex

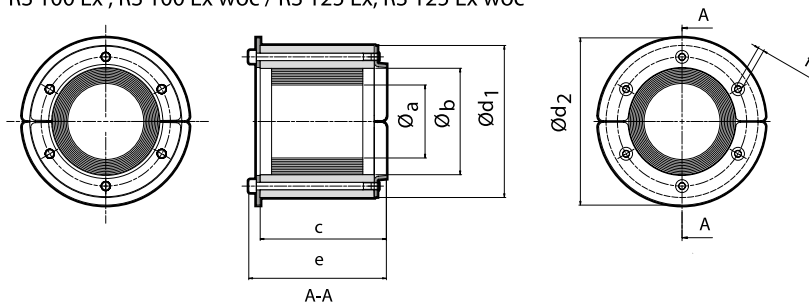


	RS 25		RS 43		RS 50		RS 75	
Pos	(mm)	(in)	(mm)	(in)	(mm)	(in)	(mm)	(in)
c	40	1.575	78	3.071	78	3.071	78	3.071
e	44	1.732	85	3.346	85	3.346	85	3.346
f	*	*	**	**	**	**	**	**
Øa	3.6	0.142	4	0.157	8	0.315	26	1.024
Øb	12	0.472	23	0.906	30	1.181	48	1.890
Ød1	25	0.984	43	1.693	50	1.969	75	2.953
Ød2	30	1.181	53	2.087	60	2.362	78	3.071

Note: All dimensions are nominal values

\* SW2.5 mm (4x) / SW0.098" (4x) \*\* SW4 mm (4x) / SW0.157" (4x)

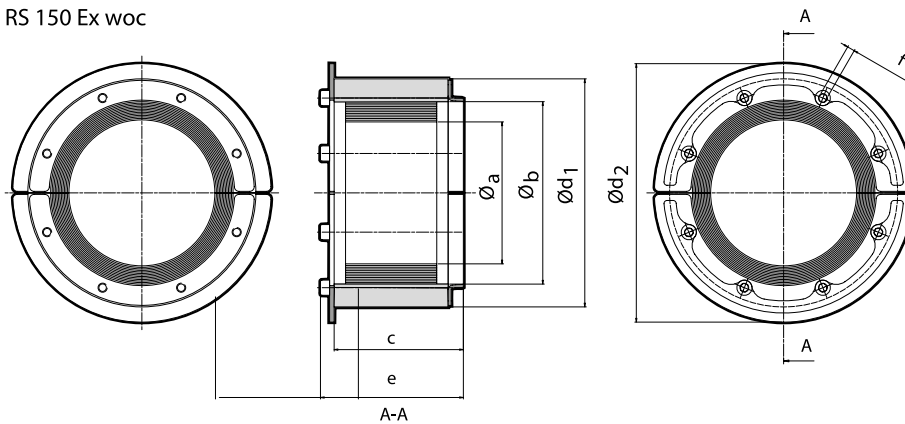
RS 100 Ex, RS 100 Ex woc / RS 125 Ex, RS 125 Ex woc



	RS 100 (woc)		RS 125 (woc)	
Pos	(mm)	(in)	(mm)	(in)
c	83	3.268	83	3.268
e	90	3.543	92	3.622
f	***	***	****	**
Øa	48	1.890	66	2.598
Øb	70	2.756	98	3.858
Ød1	100	3.937	125	4.921
Ød2	110	4.331	145	5.709

\*\*\* SW4 mm (6x) / SW0.157" (6x)  
\*\*\*\* SW5 mm (6x) / SW0.197" (6x)

RS 150 Ex woc



	RS 150 (woc)	
Pos	(mm)	(in)
c	85	3.346
e	94	3.700
f	***	***
Øa	93	3.661
Øb	119	4.685
Ød1	150	5.906
Ød2	170	6.693

\*\*\*\* SW5 mm (8x) / SW0.197" (8x)

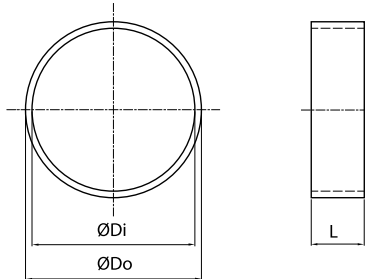


# Ex Sealing System RS Ex



## SLEEVES, TECHNICAL INFORMATION

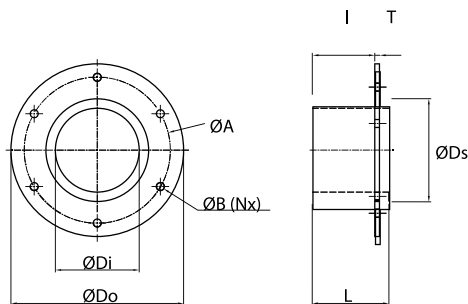
Without flange. Acid proof AISI 316



	SLR 25		SLRS 43		SLRS 50		SLRS 75	
Pos	(mm)	(in)	(mm)	(in)	(mm)	(in)	(mm)	(in)
ØDo	34	1,339	52	2,047	63	2,480	89	3,504
ØDi	25,5	1,004	44	1,732	51	2,008	76,5	3,012
L	35	1,378	65	2,559	65	2,559	65	2,559

	SLR 100		SLRS 125		SLRS 150	
Pos	(mm)	(in)	(mm)	(in)	(mm)	(in)
ØDo	164	6,457	114	4,488	140	5,512
ØDi	151	5,945	101	3,976	126	4,961
L	65	2,559	65	2,559	65	2,559

With flange. Acid proof AISI 316



	SLFRS 25		SLFRS 43		SLFRS 50		SLFRS 75		SLFRS 100		SLFRS 125		SLFRS 150	
Pos	(mm)	(in)	(mm)	(in)	(mm)	(in)	(mm)	(in)	(mm)	(in)	(mm)	(in)	(mm)	(in)
ØDo	96	3,780	110	4,331	140	5,512	165	6,496	195	7,677	213	8,386	236	9,291
ØDi	25,5	1,004	44	1,732	51	2,008	76	3,012	101	3,976	126	4,961	151	5,945
ØB	9	0,354	9	0,354	9	0,354	9	0,354	9	0,354	9	0,354	9	0,354
(Nx)	4x		4x		4x		4x		6x		6x		6x	
ØA	72	2,835	80	3,150	110	4,331	135	5,351	165	6,496	183	7,205	206	8,110
L	35	1,378	35	1,378	65	2,559	65	2,559	65	2,559	65	2,559	65	2,559
I	24	0,944	24	0,944	53	2,086	53	2,086	53	2,086	53	2,086	53	2,086
ØDs	34	1,339	52	2,047	63	2,480	89	3,504	114	4,488	140	5,512	164	6,457
T	3	0,118	3	0,118	4	0,157	4	0,157	4	0,157	4	0,157	4	0,157



# Ex Sealing System C RST Ex

## DESCRIPTION

The Roxtec C RST Ex sealing solution is available in four sizes. Together they seal single cables from Ø3.6 mm to Ø30 mm. The C RST Ex kits come as a complete sealing solution, containing a threaded sleeve with gasket, a counter nut and a round C RST seal for a single cable. A Roxtec C RST Ex kit makes installation of pre-terminated cables easy, for example in cabinet walls and other types of similar structures.



Example

## Kit C RST



C RST 25 Ex  
EXCRST010025046



C RST 31 Ex  
EXCRST010031046



C RST 43 Ex  
EXCRST010043046



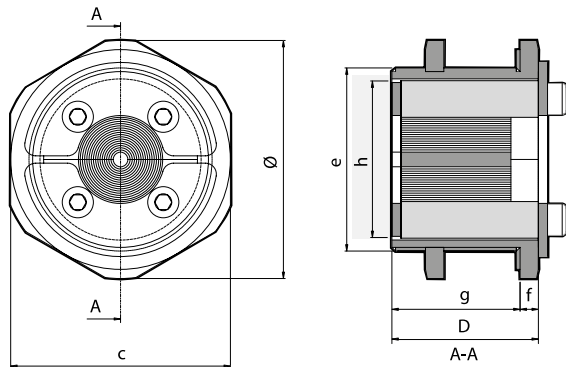
C RST 50 Ex  
EXCRST010050046

KIT	Aperture dim. +1/-0 mm (+0.0394* / -0*)		For cable/pipe Ø (mm)   Ø (pulgadas)		External dimensions sleeve ØxD (mm)   ØxD (pulgadas)		Weight (Kg)   (Lb)	
	Ø (mm)	Ø (pulgadas)	Ø (mm)	Ø (pulgadas)	ØxD (mm)	ØxD (pulgadas)	(Kg)	(Lb)
C RST 25 Ex	32	1.260	0+3.6-12.0	0+0.142-0.472	39 × 20	1.535 × 0.787	0.1	0.220
C RST 31 Ex	40	1.575	0+4.0-17.0	0+0.175-0.669	50 × 20	1.969 × 0.787	0.2	0.331
C RST 43 Ex	50	1.969	0+4.0-23.0	0+0.157-0.906	65 × 40	2.559 × 1.575	0.4	0.882
C RST 50 Ex	63	2.480	0+8.0-30.0	0+0.315-1.181	78 × 40	3.071 × 1.575	0.7	1.433



# Ex Sealing System

## C RST Ex



Note: All dimensions are nominal values

Pos	C RST 25 Ex		C RST 31 Ex		C RST 43 Ex		C RST 50 Ex Pos	
	(mm)	(in)	(mm)	(in)	(mm)	(in)	(mm)	(in)
c	36	1.4717	46	1.811	60	2.362	70	2.756
e	M 32 x 1.5	M 32 x 1.5	M40x1.5	M40x1.5	M50x1.5	M50x1.5	M63x1.5	M63x1.5
f	4	0.157	5	0.197	5	0.197	6	0.236
g	16	0.630	15	0.591	35	1.378	34	1.339
D	20	0.787	20	0.787	40	1.575	40	1.575





# Ex Sealing System Roxtec Wedge Ex



## DESCRIPTION

The Roxtec Wedge Ex is the compression unit for S, SF..W, and G Ex frames. The Roxtec Wedge Ex is a highly efficient compression unit which saves valuable installation time both when it comes to installation and re-installation of the Roxtec sealing system. This is made possible by the fact that the complete compression unit consists of only one piece, which, by turning the screws in the front, both compresses and decompresses.

### Wedge kit/parts Ex, galvanised

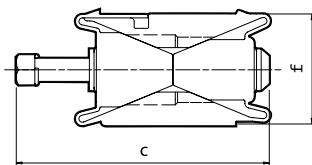


Wedge kit 120 Ex galv  
EXAWK0001201018

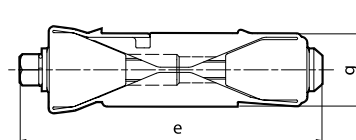
Wedge 120 Ex galv  
EXARW0001201018

KIT	External Dimensions		Weight	
	W (mm)	W (in)	(Kg)	(lb)
Wedge kit 120 Ex galv*	(wedge) 120	(wedge) 4.724	1.5	3.307
Wedge 120 Ex galv	120 4.	724	0.8	1.764

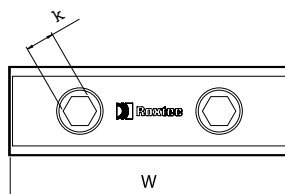
\* The Wedge kit includes one Roxtec Wedge 120Ex, five Stayplates, gauge tool, one wedge clip, one Lubricant and installation instructions.



Compressed



Uncompressed



Wedge 120 Ex

Pos	C RST 25 Ex	
	(mm)	(in)
c	109	4.291
e	130	5.118
f	48	1.890
g	29	1.142
k	SW 13	SW 0.512

Note: All dimensions are nominal values



# Ex Sealing System Roxtec Wedge Ex

Wedge kit/parts Ex, acid proof stainless steel



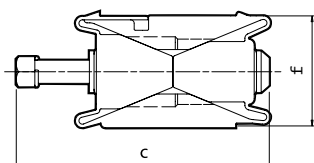
Wedge kit 120 Ex AISI 316  
EXAWK0001201021



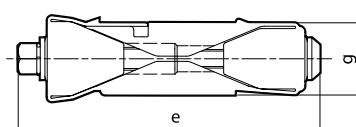
Wedge Ex AISI 316  
EXARW0001201021

KIT	External dimensions W (mm)   W (In)		Weight (Kg)   (lb)	
	Wedge kit 120 Ex AISI 316*	(wedge) 120	(wedge) 4.724	1.5
Wedge 120 Ex AISI 316	120	4.724	0.8	1.764

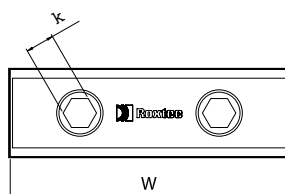
\* The Wedge kit includes one Roxtec Wedge 120 Ex, five Stay plates, gaugetool, one Wedge Clip, one Lubricant and installation instructions.



Compressed



Uncompressed



Wedge 120 Ex

Pos	C RST 25 Ex	
	(mm)	(in)
c	109	4.291
e	130	5.118
f	48	1.890
g	29	1.142
k	SW 13	SW 0.512

Note: All dimensions are nominal values



# Ex Sealing System Stayplate Ex

## DESCRIPTION

Roxtec Stayplates Ex are used for pull-out resistance against forces in cables. To be inserted between rows of modules in frames with a rectangular packing space and no built-in compression.

- For use with Group RM frames and components



Example

### Stayplate Ex

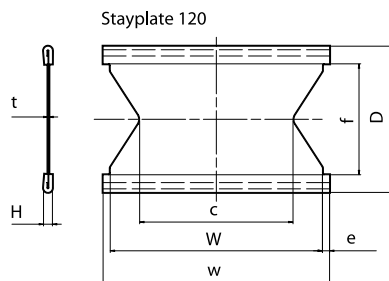


Stayplate 120 Ex galv  
EXASP001200018



Stayplate 120 Ex AISI 316  
EXASP001200021

KIT	Fits packing space W (mm)   W (in)		Weight (kg)   (lb)	
Stayplate 120 Ex galv	120	4.724	0.1	0.243
Stayplate 120 Ex AISI 316	120	4.724	0.1	0.243



Pos	(mm)	(in)
t	0.5	0.020
c	86	3.386
e	4	0.157
f	62	2.499
D	82	3.228
H	5	0.197
W	119	4.685
w	127	5.000

- galv: Galvanised
- AISI 316 Acid proof stainless steel

Note: All dimensions are nominal values



## Ex Sealing System Lubricant



Lubricant 10 ml  
ALT0000001000



Lubricant 25 ml  
ALT0000003000

Natural tallow is used to lubricate the sealing modules, Roxel Wedge and the inside of the frame. This provides even compression and a secure seal.



## Ex Sealing System Roxel wedge clip



Example

The Roxel wedge clip is delivered with the Roxel wedge. Attach the wedge clip to the wedge bolts to check that the wedge has been properly tightened.



## Ex Sealing System Assembly / Disassembly Tools

The Pre Compression tools, small and large, help compressing installed modules and stayplates to make more room for the Roxel Wedge. During installation they also help keeping the items in place..



Pre Compression Tool, small  
5ICT000001269



Pre Compression Tool, large  
ICT0001000000





## Ex Sealing System Assembly / Disassembly Tools

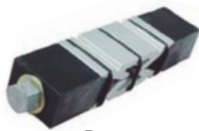


Pre-compression  
eccentric tool,  
large  
ICT0001000301

Pre-compression  
eccentric tool,  
small  
ICT0001000302

Pre-compression  
eccentric tool,  
compact  
ICT0001000316

The different types of pre-compression tools facilitate installations by compressing rows of modules and stayplates to make more room for the Roxtec Wedge during installation.



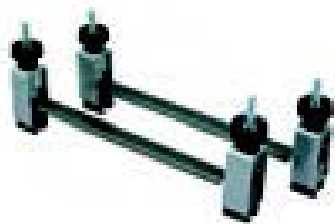
**Pre-compression wedge 60/40**  
5ICT000003691



**Pre-compression wedge 120**  
ICT0001000500



**Handgrip pre-comp**  
ICT0001000401



**Stayplate clip**  
ICT0001000200

Stayplate clamps for horizontal installations. To be used with stayplates, minimum width 120 mm, 4.724"..



**Stayplate clip**  
ICT0001000200

Stayplate clip for use with RM stayplates, minimum width 120 mm, 4.724".



## Ex Sealing System Slide Caliper

A handy tool for easy selection of proper module size and its adaptation. Shows cable OD, corresponding module and approximately how many layers to peel in each module half.



**Slide Caliper**  
IQR0001000000

## DELVALLE OFFERS OTHER SOLUTIONS ATEX

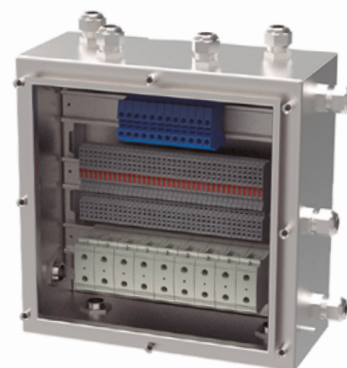
Atex enclosure  
**Luxorex** Serie



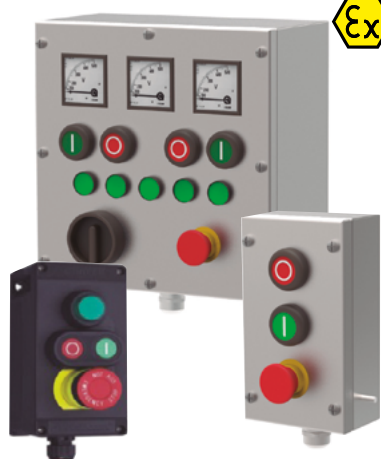
Increased safety enclosure  
**Tribex** Serie



Atex terminal boxes  
**Terbox** Serie



Control equipment  
**Contrex** Serie



Plug and socket boxes  
**Connex** Serie

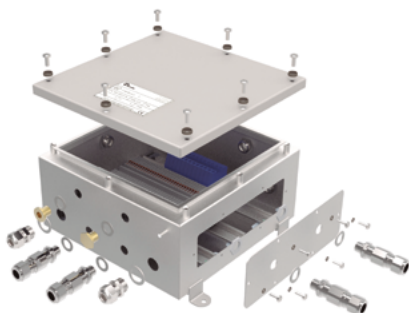


Pressurized enclosure Ex p  
**Peppex** Serie

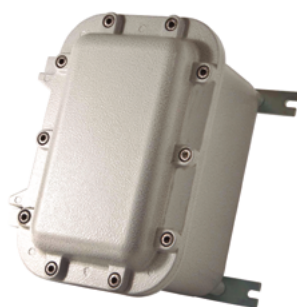


## DELVALLE OFFERS OTHER SOLUTIONS ATEX

Atex junction box  
**Geoex Serie**



Flameproof enclosure  
 Atex Ex d  
**EJB Serie**



Workstations  
**Pcex Serie**



Smartphones &  
**Tablets**



Radios Atex Ex  
**Walkies Talkies**



Ventilation and  
**Air Conditioning**





/ Soluciones flexibles Atex e IECEX



Paso del Prao, 6. 01320 Oyón (Álava). Spain

Telf. +34 945 601 381

[www.atexdelvalle.com](http://www.atexdelvalle.com) - [atex@atexdelvalle.com](mailto:atex@atexdelvalle.com)

**Contacta con nosotros, estamos a tu disposición.**