

STAINLESS STEEL

Zones I, 2, 21 and 22



atex@atexdelvalle.com | www.atexdelvalle.com

CONTROL STATIONS AND DISTRIBUTION BOXES

CONTREX SERIES IP66



STAINLESS
ANTICORROSIVE
GUARANTEE



MECHANICAL PARTS
GUARANTEE



• WE ARE •
MANUFACTURERS
CERTIFIED

1.22

Delvalle, wide experience in manufacturing solutions for hazardous area



WE PUT AT YOUR DISPOSAL

We offer over **50 years** providing hazardous area **solutions** to demanding customers who require very specific characteristics and behaviour according to the sector and their needs.

WHEREVER YOU GO

We are committed to working closely with our customers, providing them with exceptional service and offering an advanced and **extensive range of hazardous area products** with very competitive prices.

CONSULTING & ENGINEERING

Atex Delvalle adapts to our clients' needs by offering hazardous-area systems. Atex-delvalle are the leading certified assembler of Ex junction boxes, our **customized services**, **experienced design** and drafting 3D support.

HIGH STANDARD OF QUALITY AND SERVICES

We only use materials provided by companies who offer the very highest quality, suitable and certified products. Our success is due to **top quality** assurance: ISO 9001, SGS, UL, TÜV, ISO 14000, Ohsas 1800, Atex, IECEx.



100%
*Entirely designed
and manufactured
in Europe*



CONTACT US

Confidentiality, reliability & quality

www.atexdelvalle.com
atex@atexdelvalle.com
+34 945 601 381

ALSO ONLINE

Please contact our technical sales department.

A team of professionals with high experience and ability to solve all your queries.



CRITERIA FOR CHOOSING CONTROL STATIONS



Contrex-Geoex Series



Contrex-Luxorex Series



Contrex-Tribex Series

**Get Control in Any Area
With Maximum Security
and Flexibility**

Atex control boxes. They are specially designed to perform checks, maneuvers and as actuators in explosive atmospheres. They have a rugged, corrosion system and finished in stainless steel.

**We have three models in the
Contrex Series:**

- **Control stations screw closure (Contrex-Geoex Series)**
- **Hinged terminal & junction boxes (Contrex-Luxorex Series)**
- **High capacity & junction boxes (Contrex-Tribex Series)**

It allows you to perform maneuvers and controls at the machine in hazardous areas and take programming and automation in a safe area. Offering customers a great combination of possibilities and flexibility. Select the component that best suits your operator panels, keypads, mushrooms, switches, ammeters,..., and you assemble all with Atex certified, Ex & IECEx and UL.

➔ **FOR MORE INFORMATION CLICK HERE**

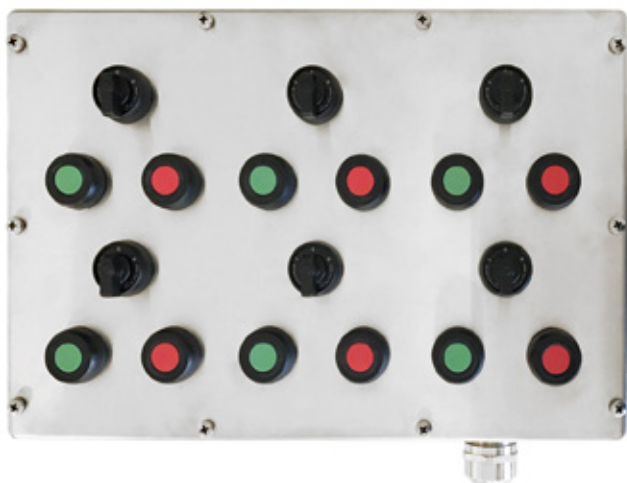
**Zones I, 2, 21 and 22**

LOCAL CONTROL AND DISTRIBUTION BOXES

CONTREX-GEOEX SERIES IP66



Examples



**Custom Made
in Any Size**

Atex control boxes they are specially designed to perform checks, maneuvers and as actuators in explosive atmospheres. They have a rugged, anti-corrosion system and finished in stainless steel.

They it allows you to perform maneuvers and automation controls at the machine in hazardous areas control. Offering customers great combinations and flexibility. Select the components that best suit your operator panels, keypads, mushrooms, switches, ammeters, HMI,... and we assemble all with Atex certified Ex, IECEx and UL.

➔ **FOR MORE INFORMATION CLICK HERE**





GENERAL FEATURES

- Zones I, 2, 21 and 22.
- Protection type: IP66.
- Max connection: terminals 2,5mm².
- Up to 4 push button actuators.
- Easy assembly and custom made solutions.
- Certificates IECEx and Atex.

OPTIONS

- Cable entry
 - Standard: 1 gland in the lower side of M25.
 - Special: glands at the bottom and other sizes. Consult information.
- Stainless steel enclosure, AISI304L or option AISI316L.

CERTIFICATES

- Certificates number:
 - LOM I4ATEX2082
 - IECEx LOM I8.0001X
- Type protection:
 - II2G Ex d e II... T... Gb
 - II2G Ex e mb II..T.. Gb
 - II2G Ex d e mb II... T... Gb
 - II2D Ex t III... T... °C Db
 - III/2G Ex ia/ib II* T6 Ga/Gb
 - III/2D Ex ia/ib IICT85°C Da/Db
- Standard:
 - Directiva 2014/34/UE
 - EN 60079-0:2012
 - EN 60079-7:2007
 - EN 60079-31:2014
 - IEC 60079-0:2011
 - IEC 60079-7:2015
 - IEC 60079-31:2013
- Ambient temperature:
 - -25°C < Ta < +60°C

CUSTOM MADE CONTROL STATIONS BOXES PERSONALICE

1. SELECT THE SIZE OF THE BOX

2. CUSTOMIZE THE BOX WITH ACTUATORS

3. ADD THE CABLE GLANDS

4. DELVALLE GIVES PROJECT AND CERTIFIED ATEX / IECEx



DISTRIBUTION AND CONTROL CABINETS

CONTREX-LUXOREX SERIES IP66



Control Cabinet with Atex Final Product Certificate

Distribution and control cabinets Contrex-Luxorex Series have been designed to be able to implement different devices and actuators on the customer's specifications and be delivered with an Atex final product certificate.

These cabinets stand out due to their easy door opening, up to 170 degrees by quarter-turn locks and hinges as well as by incorporating Atex & IECEx components pre-installed.

➔ FOR MORE INFORMATION CLICK HERE

Example



CHARACTERISTICS

They are provided for a voltage up to 1100 V and for a maximum ambient temperature up to +60°C, depending on the kind of temperature needed and currents assigned.

As for the enclosure, it is a cabinet with quarter-turn closures and hinges made of stainless steel with 170° door opening with the following characteristics:

- Atex cabinets with stainless steel AISI 304L revolving door or AISI 316L and a polished elegant surface finish.
- They are intended for use in explosive atmospheres listed as zones 1, 2, 21 and 22 and to place Ex components and terminals inside, as well as cable glands.
- Fabrication of the cabinet based on a unique system of welding and folding monobloc that achieves a perfect sealing and resistance to impact with pre-assembled body and door and minimum welding.
- Atex M8 mass insert for external connection.
- Double-bit quarter-turn locks made of stainless and 170° opening hinges steel.
- Very resistant polyurethane joint from -25°C to +60°C.
- Silicone seal -45°C +135°C (optional).
- Plugs, holes and hinges that withstand temperatures from -25°C to +60°C.
- Atex cable glands, as well as Roxtec cable entry systems.



ADVANTAGES

- Customized design and execution.
- Optimized working thanks to a wide range of integrated equipment
- Single door opening with double bit fasteners.
- Great turn of door opening 170 °.
- Polished finish on all sides.
- Robustness, security and guaranteed reliability.
- Variety of dimensions with large interior space that simplifies connection operations.
- Atex & IECEx components already installed inside.
- Use both indoors and outdoors or in corrosive areas.
- Anti-corrosion protection guaranteed.
- Great safety and resistance in the most aggressive explosive environments thanks to the design and the materials used in its manufacture.
- 5 year warranty on mechanical parts, and 10 year warranty on stainless steel.



OPTIONS

- Cabinets used as maneuver stations, incorporating certified components of connection, maneuver, signaling: push buttons, emergency mushrooms, lights, push buttons.
- We manufacture with water tightness and Atex & IECEx certifications
- The cabinets can be used with increased in: "Ex e" or "Ex t".
- These control stations may be used for connection of intrinsically safe circuits.
- Design and layout of custom components.
- Atex cable glands, as well as Rextec cable entry systems.

PROTECTION MODE

This enclosure is certified for use in potentially explosive atmospheres in zones 1, 2, 21 and 22 and may be used with increased safety protection mode "Ex e" including increased safety connection terminals or enclosure protection mode "Ex tb".

- Atex protection mode:
 - II 2G Ex eb IICT6 Gb
 - II 2D Ex tb IICT85°C Db
- IECEx protection mode:
 - Ex eb IICT6 Gb
 - Ex tb IICT85°C Db
- Degree of resistance against impact IK10
- IP66 protection

NORMATIVE

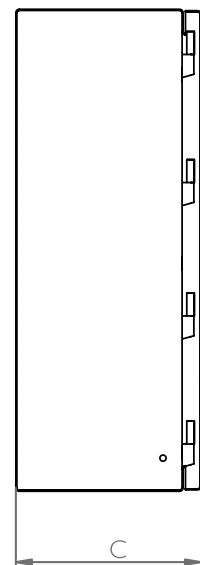
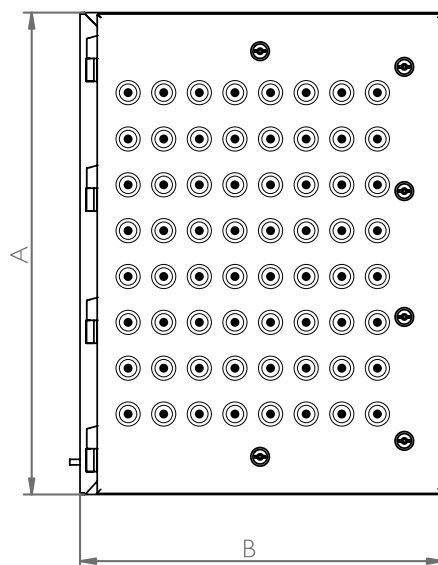
Atex & IECEx directive and regulations:

- Atex Directive 2014/34 / EU
- Certificate of the envelope as a component:
 - LOM I4ATEX3026U
- Equipment Certificate:
 - LOM I7ATEX1011
- Quality certificate:
 - LOM I4ATEX9050
- IP66 according to IEC Standard EN 62208 and EN 60529
- Complies with RoHs regulations

- Degree of resistance against impact IK10 according to standard IEC62208 and EN62262
- EN 60079-7: 2007
- EN 60079-31: 2014
- UNE-EN 60079-0: 2011
- UNE-EN 60079-1: 2015
- UNE-EN 60079-5: 2008
- UNE-EN 60079-7: 2007
- UNE-EN 60079-18: 2016
- UNE-EN 60079-25: 2010
- UNE-EN 60079-31: 2014

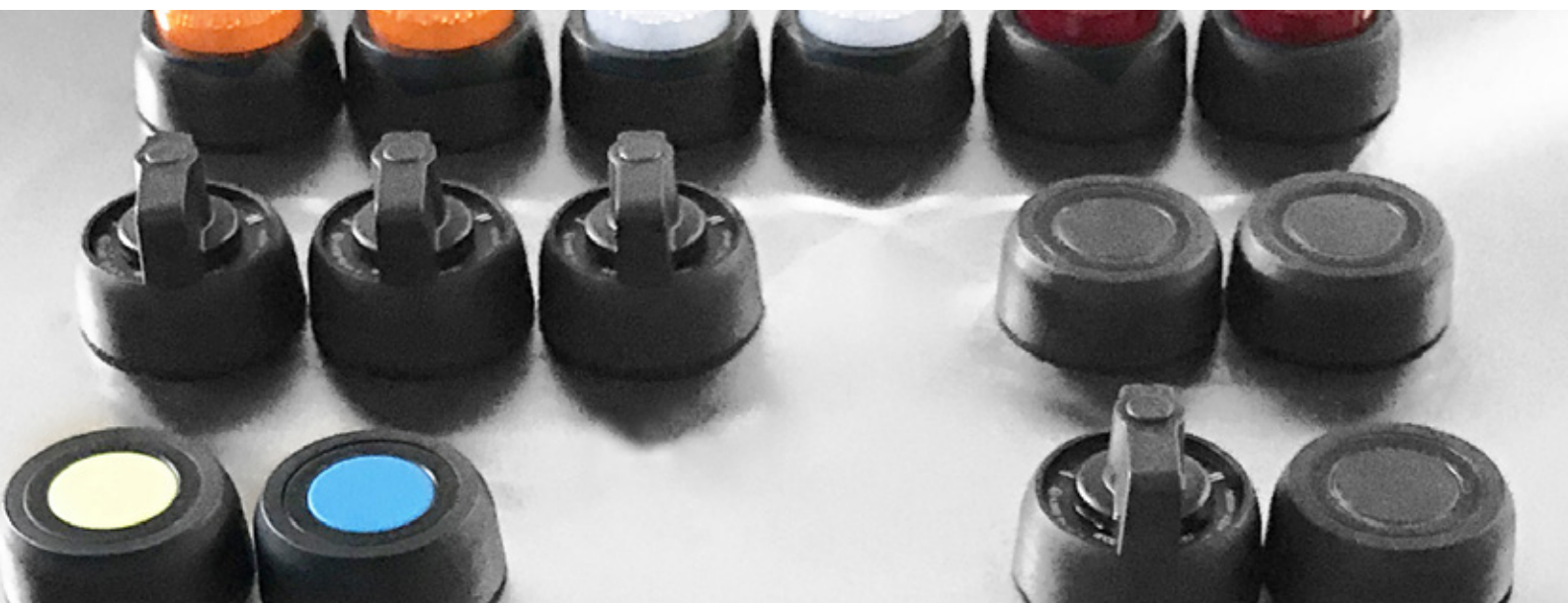


BLUEPRINT AND DIMENSIONS



REFERENCES

REFERENCES	DIMENSIONS (mm)			MAXIMUM NUMBER		
	HEIGHT (A)	WIDTH (B)	DEPTH (C)	MEASURING DEVICES	PLUG MOUNTING PLUGS	ACTUATORS
LXCSP302015EX	300	200	155	3	2	6
LXCSP383015EX	380	300	155	6	6	19
LXCSP504021EX	500	400	210	12	9	25
LXCSP605021EX	600	500	210	20	16	49
LXCSP806030EX	800	600	300	30	30	64
LXCSP108030EX	1000	800	300	42	56	90





Zones 1, 2, 21 and 22

LARGE SIZE DISTRIBUTION AND CONTROL CABINETS

CONTREX-TRIBEX SERIES IP66



Example

Large Sizes

The distribution local control panels of Contrex-Tribex Series incorporates different devices and actuators according to the customer's needs and is delivered with Atex final product certificate. No need to be homologated in a laboratory once assembled.

Atexdelvalle have been providing world class ex panel and ex enclosure solutions for several years now and we often get asked by our customers to provide fully wired up Ex enclosures so they can just plug in and play.

The distribution and control device combinations of Atex Delvalle are built according to customer specifications for use in areas with flammable gases and dust.

We have a set of Atex actuators that can be implemented: Atex buttons, Atex ammeters, Atex selectors, Atex voltmeters, Atex lights,... to implement in our Atex enclosures and give the complete solution.

➔ [FOR MORE INFORMATION CLICK HERE](#)

CHARACTERISTICS

The stand Ex enclosures hinged door, high capacity, to house great amount of elements and of devices for explosive atmospheres.

They are designed for a maximum voltage of up to 1100V and for maximum ambient temperature up to 60°C, according to class of temperature marked and currents assigned.

With regard to the Ex enclosure, is made of stainless steel Tribex, which has the following characteristics:

- Ex stand enclosures made of stainless steel AISI 304L or AISI 316L and satin polished surface finish.
- They are intended for use in explosive atmospheres classified as Zones I, 2, 21 and 22 and to place Ex components and terminals inside, as well as cable glands.
- Unique monobloc system that achieves perfect sealing and impact resistance. With body and door pre-assembled, and minimum welding.
- Dough insert that allows external connection.
- With double-bit quarter-turn closures and hinges made of stainless steel.
- Very resistant polyurethane seal from -25°C to +60°C. or silicone -40°C to +130°C.
- Plugs, holes and hinges that resist from -25°C to +60°C.



ADVANTAGES

- Contrex-Tribex is the largest approved Ex enclosure now stands at two door 2000mm(h)x2000(w)x1000(d). or in one door 2000(h)x1000(w)x1000(d)
- Fully wired panels, Full Customized design and execution.
- Functionality optimized thanks to a wide range of integrated equipment.
- Equipped with integrated actuators.
- Degree of IP66 tightness.
- Atex & IECEx components already installed inside.
- Use both inside and outside.
- Large interior space that simplifies connection operations.
- Anti-corrosion protection guaranteed.
- It can store a large number of terminals. Up to 1550 terminals in one cabinet.
- Robustness, safety, reliability tested.
- Great safety and resistance in the most aggressive explosive environments thanks to the design and the materials used in its manufacture.
- Double access option (front and rear doors).
- Made to order in AISI 316L with high corrosion resistant & maritime areas.

OPTIONS

- Ex Enclosures used as maneuvering stations, incorporating certified components of connection, maneuver, signaling: push buttons, emergency mushrooms, lights, push buttons.
- We manufacture waterproof IP66 with Atex & IECEx certifications.
- The Ex enclosures can be used with increased safety protection mode “Ex e” including increased safety connection terminals or “Ex t” ex enclosure protection mode.
- Enclosures used with enclosure protection mode.
- These control stations may be used for connection of intrinsically safe circuits.

PROTECTION MODE

This Enclosure is certified for use in potentially explosive atmospheres in zones 1, 2, 21 and 22 and may be used with increased safety protection mode “Ex e” including increased safety connection terminals or enclosure protection mode “Ex t”.

- Protection mode:
 - II 2G Ex eb IICT6 Gb
 - II 2D Ex tb IICT85°C Db
- Resistance against impact IK10
- IP66 enclosure protection.



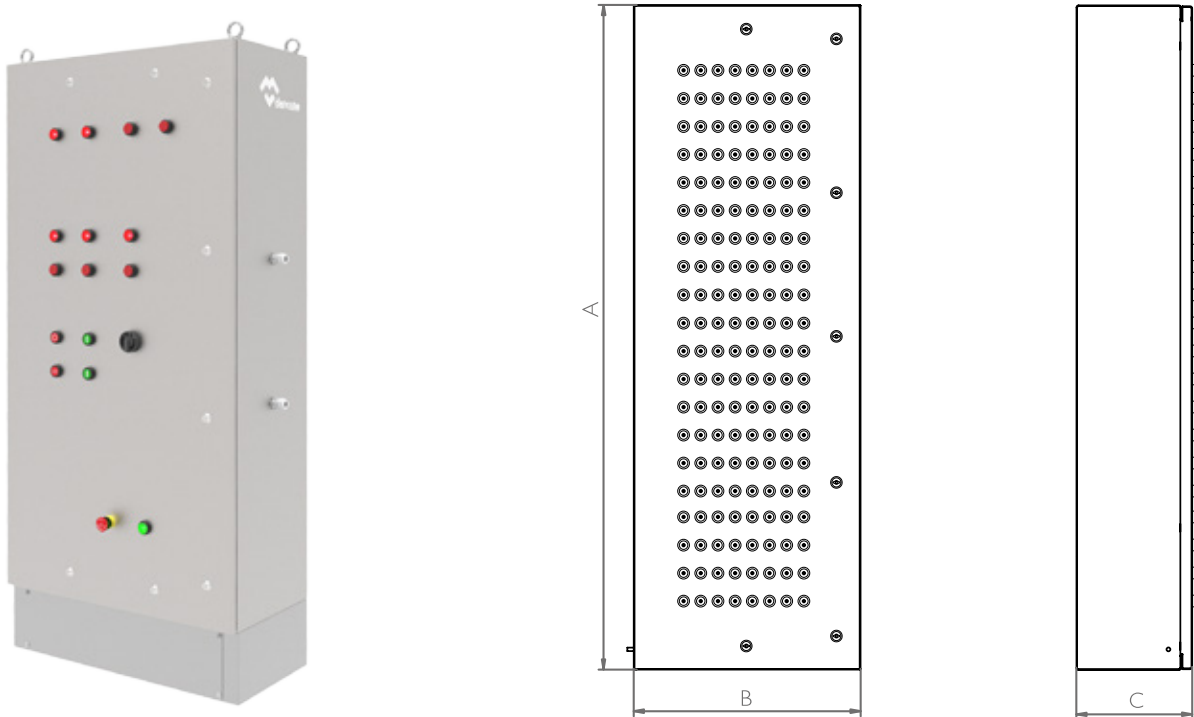
NORMATIVE

Atex & IECEx directive and regulations:

- Atex Directive 2014/34 / EU
- Certificate of the envelope as a component:
 - LOM I4ATEX3026U
- Equipment Certificate:
 - LOM I7ATEX1012
- Quality certificate:
 - LOM I4ATEX9050
- IP66 according to IEC Standard EN 62208 and EN 60529
- Complies with RoHs regulations

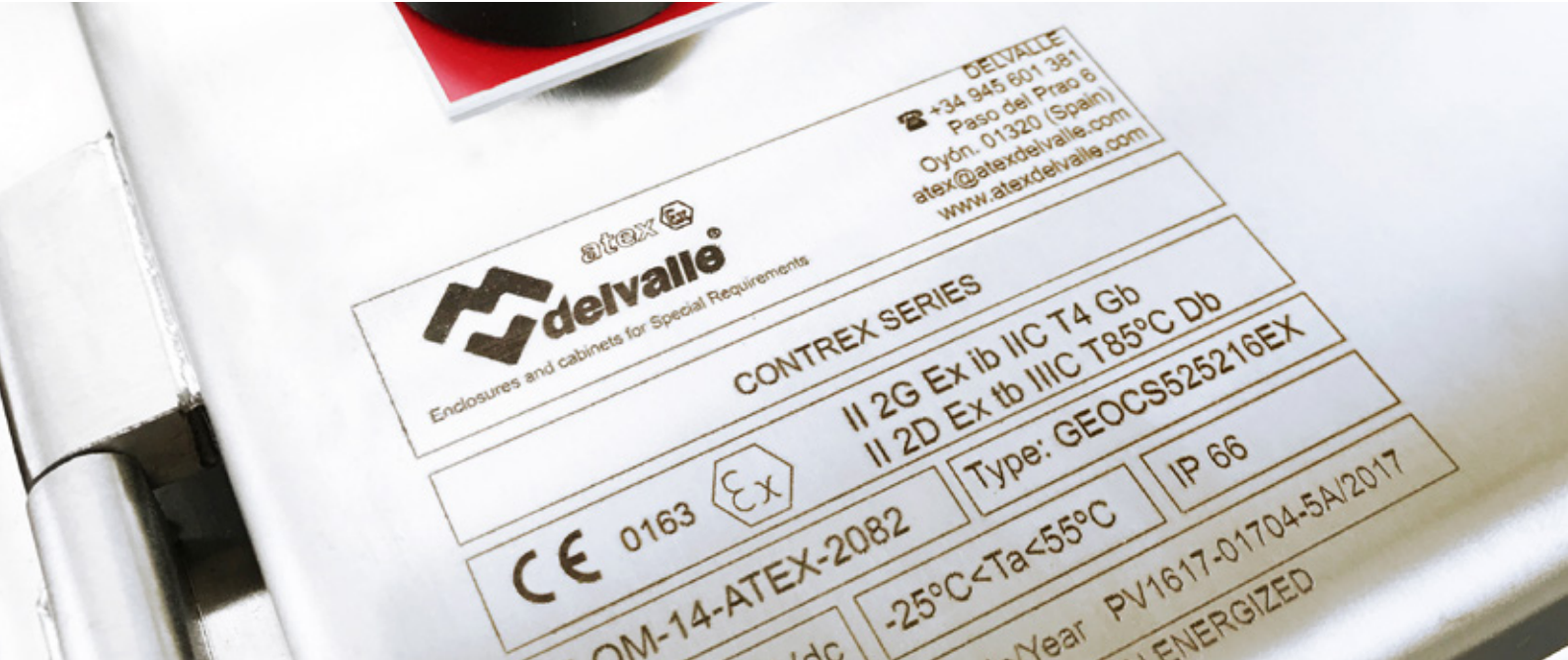
- Degree of resistance against impact IK10 according to standard IEC62208 and EN62262
 - EN 60079-7:2007
 - EN 60079-31:2014
 - UNE-EN 60079-0:2011
 - UNE-EN 60079-1:2015
 - UNE-EN 60079-5:2008
 - UNE-EN 60079-7:2007
 - UNE-EN 60079-18:2016
 - UNE-EN 60079-25:2010
 - UNE-EN 60079-31:2014

BLUEPRINT AND DIMENSIONS



REFERENCES

REFERENCES	DIMENSIONS (mm)			MAXIMUM NUMBER		
	HEIGHT (A)	WIDTH (B)	DEPTH (C)	MEASURING DEVICES	PLUG MOUNTING PLUGS	ACTUATORS
TBCSI26030EX	1200	600	300	36	36	80
TBCSI66030EX	1650	600	300	64	64	144
TBCSI86030EX	1800	600	300	68	68	160





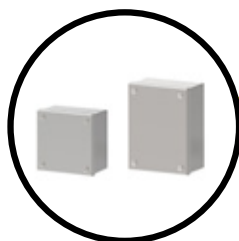
Zones 1, 2, 21 and 22

CUSTOM MADE CONTROL STATION BOXES

Atex Delvalle produces Ex local control stations, Ex distribution boxes and hazardous area enclosures for use in IECEx areas with flammable gases and dusts. Depending on the application area, the former control stations are designed with the type...

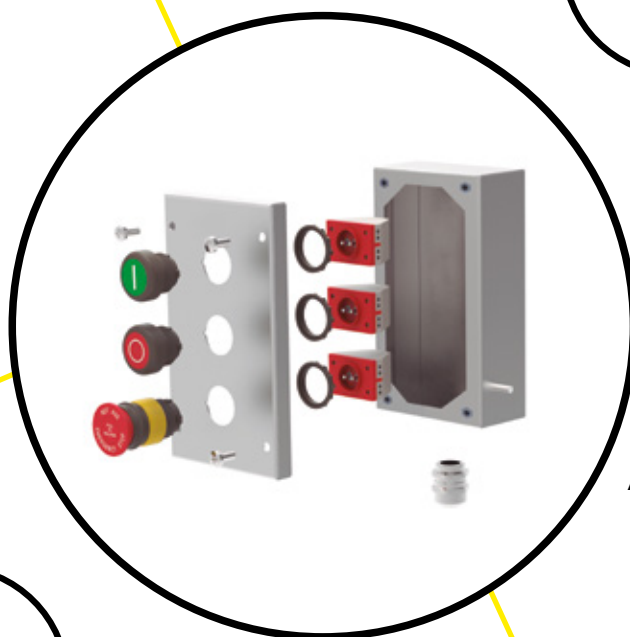
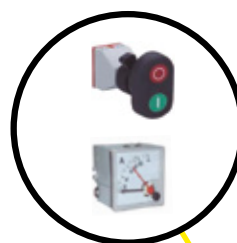
1. SELECT THE SIZE OF THE BOX

We provide various dimensions



2. CUSTOMIZE THE BOX WITH ACTUATORS

Customize your control stations boxes to measure



4. DELVALLE GIVES PROJECT AND CERTIFIED ATEX / IECEx

Only one certificate for your custom-made solution



3. ADD THE CABLE GLANDS

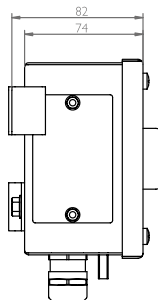
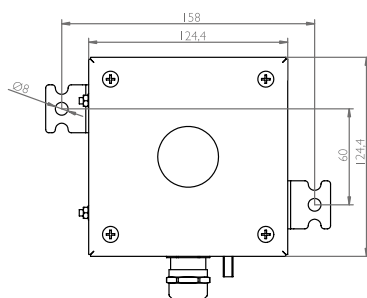
We fix hazardous-area actuating elements





Zones 1, 2, 21 and 22

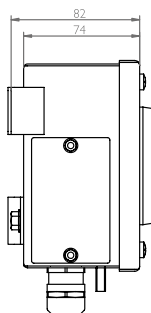
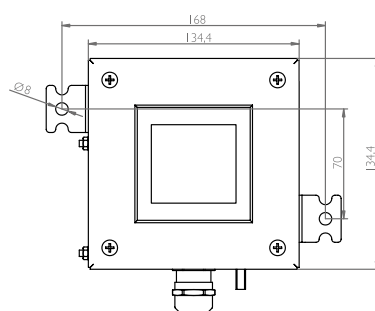
CUSTOMIZE STAINLESS STEEL YOUR CONTROL STATION BOXES



REFERENCE
FOR ONE ACTUATOR BOXES

GEOCSI21275EX

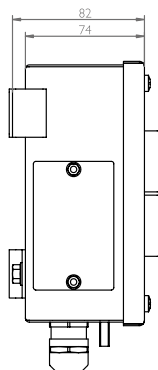
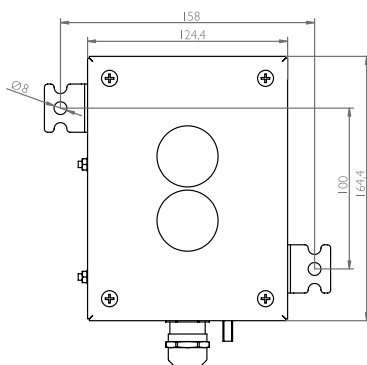
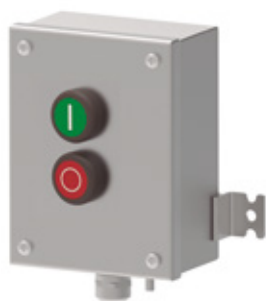
For steel AISI 316L add to the end
of the reference number (316)



REFERENCE
TO A VOLTMETER
AND AMMETER BOXES

GEOCSI31375EX

For steel AISI 316L add to the end
of the reference number (316)

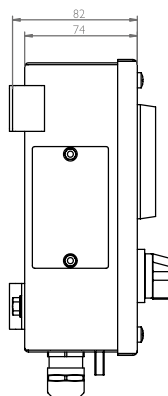
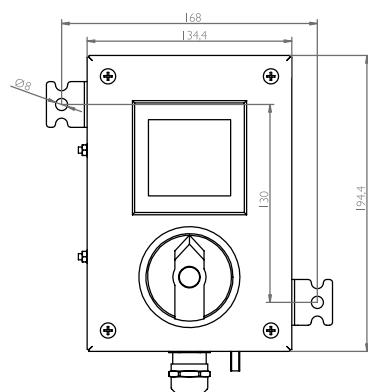


REFERENCE
FOR TWO ACTUATORS BOXES

GEOCSI61275EX

For steel AISI 316L add to the end
of the reference number (316)

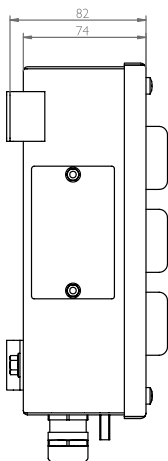
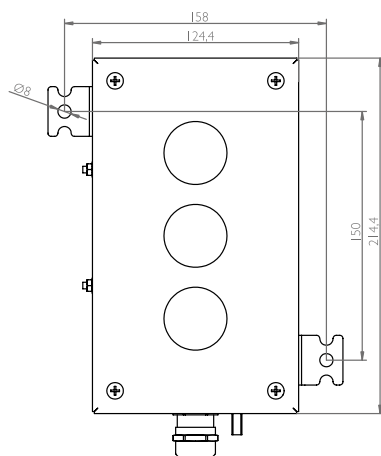
CUSTOMIZE YOUR CONTROL STATIONS BOXES STAINLESS STEEL



REFERENCE
TO A VOLTMETER
AND AMMETER BOXES

GEOCS191375EX

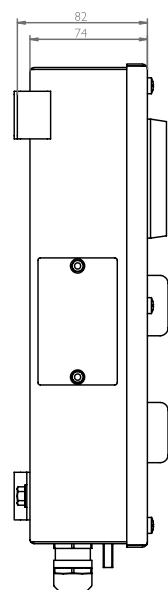
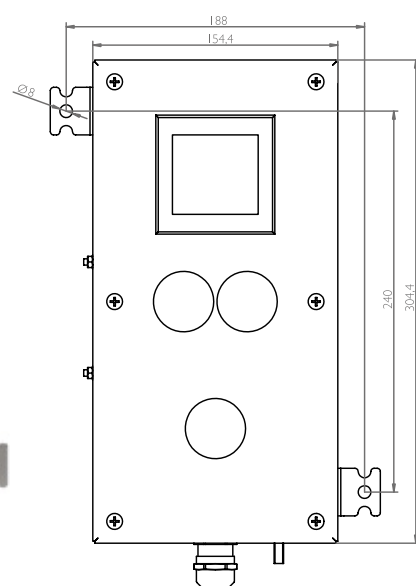
For steel AISI 316L add to the end
of the reference number (316)



REFERENCE
FOR THREE ACTUATORS BOXES

GEOCS211275EX

For steel AISI 316L add to the end
of the reference number (316)



REFERENCE
FOR VARIOUS ACTUATORS BOXES

GEOCS301575EX

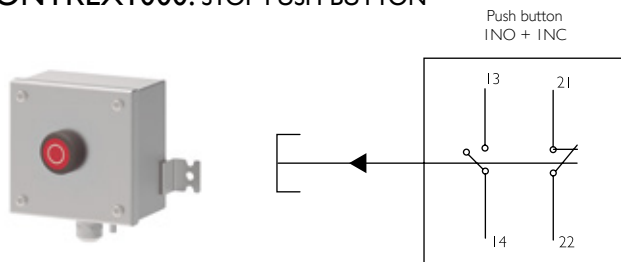
For steel AISI 316L add to the end
of the reference number (316)


Zones 1, 2, 21 and 22

PRE-ASSEMBLED STAINLESS STEEL CONTROL BOXES

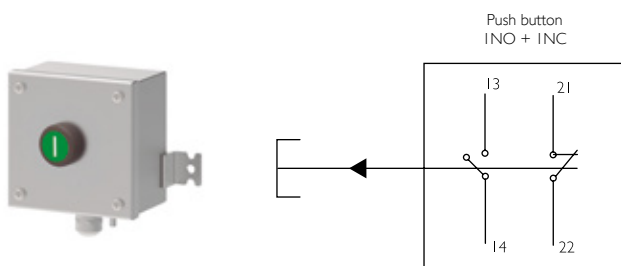
CONTREX-GEOEX SERIES IP66

CONTREX I000. STOP PUSH BUTTON



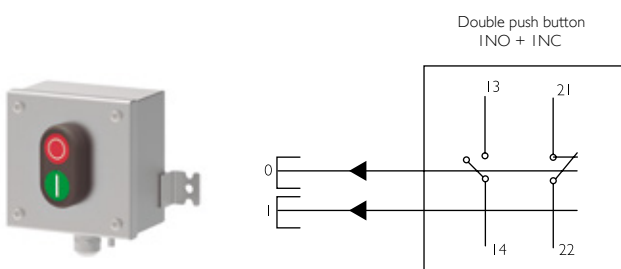
REFERENCE	CONTREX I000
SIZE	120x120x75 (option AISI304L and AISI316L)
IT CONTAINS	<ul style="list-style-type: none"> • Stop push button NO + NC • Nickel plated brass for non armored cable M20 (option stainless steel). Option others metrics, other materials, for armored cable,...

CONTREX I010. START PUSH BUTTON



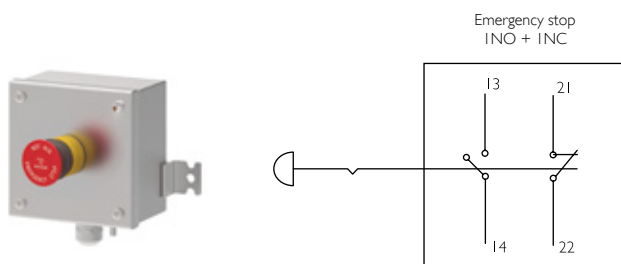
REFERENCE	CONTREX I010
SIZE	120x120x75 (option AISI304L and AISI316L)
IT CONTAINS	<ul style="list-style-type: none"> • Start push button NO + NC • Nickel plated brass for non armored cable M20 (option stainless steel). Option others metrics, other materials, for armored cable,...

CONTREX I020. DOUBLE PUSH BUTTON



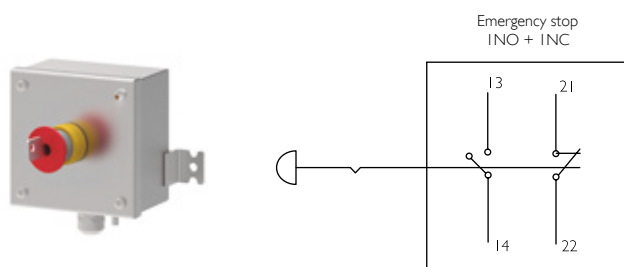
REFERENCE	CONTREX I020
SIZE	120x120x75 (option AISI304L and AISI316L)
IT CONTAINS	<ul style="list-style-type: none"> • Double push button NO + NC • Nickel plated brass for non armored cable M20 (option stainless steel). Option others metrics, other materials, for armored cable,...

CONTREX I030. EMERGENCY STOP BUTTON



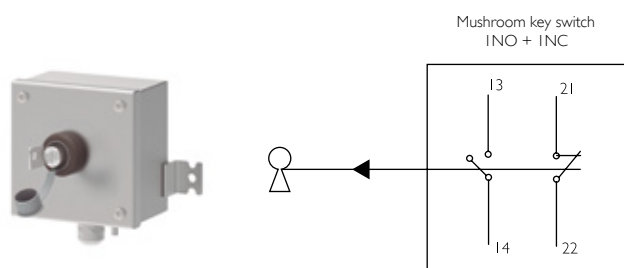
REFERENCE	CONTREX I030
SIZE	120x120x75 (option AISI304L and AISI316L)
IT CONTAINS	<ul style="list-style-type: none"> • Emergency stop button NO + NC • Nickel plated brass for non armored cable M20 (option stainless steel). Option others metrics, other materials, for armored cable,...

CONTREX I03 I. EMERGENCY STOP BUTTON WITH KEY



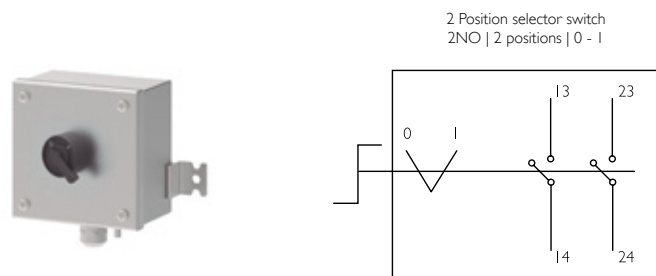
REFERENCE	CONTREX I03 I
SIZE	120x120x75 (option AISI304L and AISI316L)
IT CONTAINS	<ul style="list-style-type: none"> Emergency stop button with key NO + NC Nickel plated brass for non armored cable M20 (option stainless steel). Option others metrics, other materials, for armored cable,...

CONTREX I040. MUSHROOM KEY SWITCH



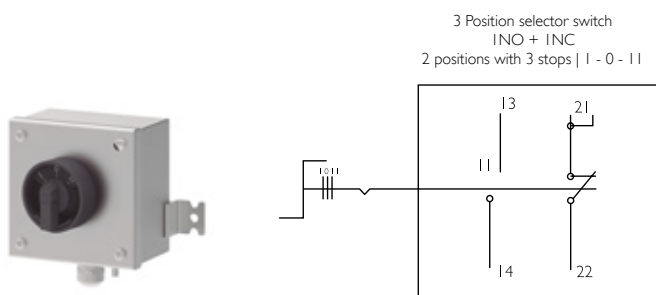
REFERENCE	CONTREX I040
SIZE	120x120x75 (option AISI304L and AISI316L)
IT CONTAINS	<ul style="list-style-type: none"> Mushroom key switch NO + NC Nickel plated brass for non armored cable M20 (option stainless steel). Option others metrics, other materials, for armored cable,...

CONTREX I05 I. 2 POSITION SELECTOR SWITCH

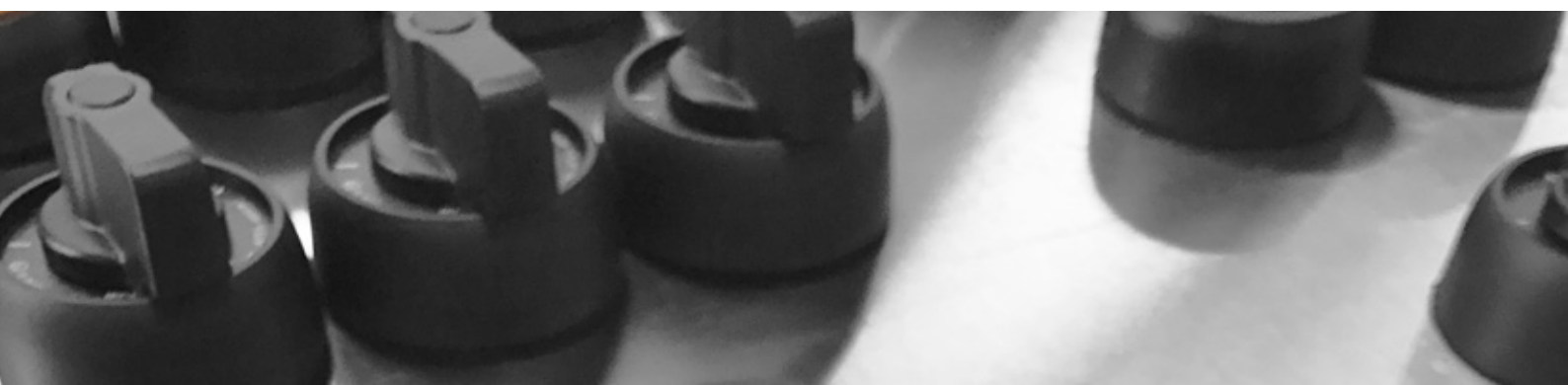


REFERENCE	CONTREX I05 I
SIZE	120x120x75 (option AISI304L and AISI316L)
IT CONTAINS	<ul style="list-style-type: none"> 2 position selector switch NO Nickel plated brass for non armored cable M20 (option stainless steel). Option others metrics, other materials, for armored cable,...

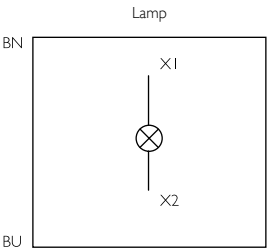
CONTREX I050. 3 POSITION SELECTOR SWITCH



REFERENCE	CONTREX I050
SIZE	120x120x75 (option AISI304L and AISI316L)
IT CONTAINS	<ul style="list-style-type: none"> 3 position selector switch NO + NC Nickel plated brass for non armored cable M20 (option stainless steel). Option others metrics, other materials, for armored cable,...

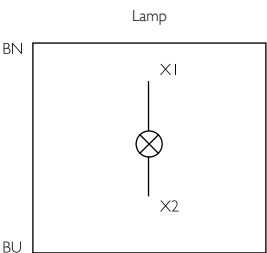


CONTREX I061. WHITE SIGNAL LAMP



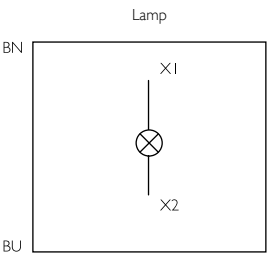
REFERENCE	CONTREX I060
SIZE	120x120x75 (option AISI304L and AISI316L)
IT CONTAINS	<ul style="list-style-type: none"> • White signal lamp • Nickel plated brass for non armored cable M20 (option stainless steel). Option others metrics, other materials, for armored cable,...

CONTREX I061. GREEN SIGNAL LAMP



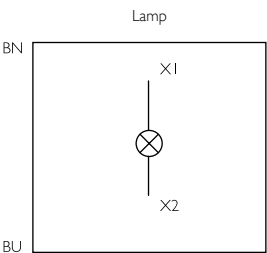
REFERENCE	CONTREX I061
SIZE	120x120x75 (option AISI304L and AISI316L)
IT CONTAINS	<ul style="list-style-type: none"> • Green signal lamp • Nickel plated brass for non armored cable M20 (option stainless steel). Option others metrics, other materials, for armored cable,...

CONTREX I062. RED SIGNAL LAMP



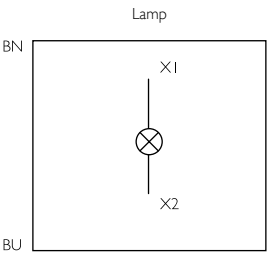
REFERENCE	CONTREX I062
SIZE	120x120x75 (option AISI304L and AISI316L)
IT CONTAINS	<ul style="list-style-type: none"> • Red signal lamp • Nickel plated brass for non armored cable M20 (option stainless steel). Option others metrics, other materials, for armored cable,...

CONTREX I063. YELLOW SIGNAL LAMP



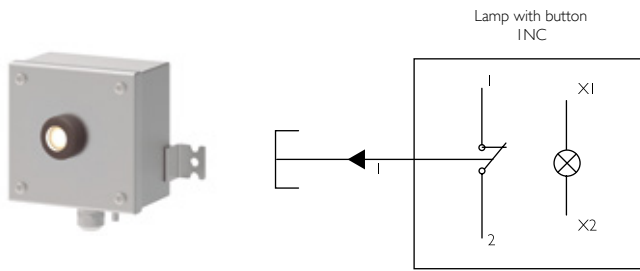
REFERENCE	CONTREX I063
SIZE	120x120x75 (option AISI304L and AISI316L)
IT CONTAINS	<ul style="list-style-type: none"> • Yellow signal lamp • Nickel plated brass for non armored cable M20 (option stainless steel). Option others metrics, other materials, for armored cable,...

CONTREX I064. BLUE SIGNAL LAMP



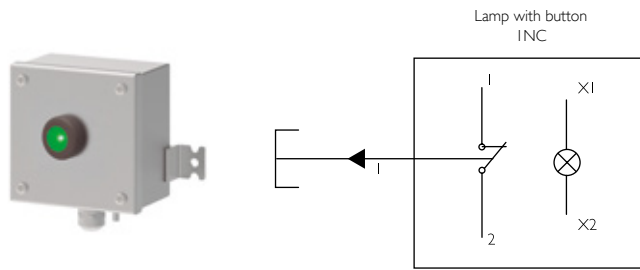
REFERENCE	CONTREX I064
SIZE	120x120x75 (option AISI304L and AISI316L)
IT CONTAINS	<ul style="list-style-type: none"> • Blue signal lamp • Nickel plated brass for non armored cable M20 (option stainless steel). Option others metrics, other materials, for armored cable,...

CONTREX I070. WHITE SIGNAL LAMP WITH BUTTON NC



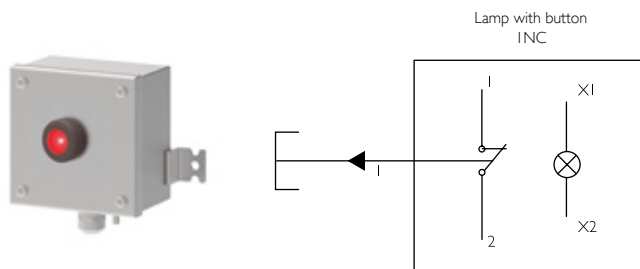
REFERENCE	CONTREX I070
SIZE	120x120x75 (option AISI304L and AISI316L)
IT CONTAINS	<ul style="list-style-type: none"> • White signal lamp with button NC • Nickel plated brass for non armored cable M20 (option stainless steel). Option others metrics, other materials, for armored cable,...

CONTREX I071. GREEN SIGNAL LAMP WITH BUTTON NC



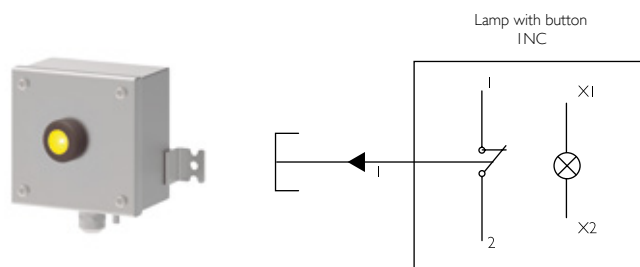
REFERENCE	CONTREX I071
SIZE	120x120x75 (option AISI304L and AISI316L)
IT CONTAINS	<ul style="list-style-type: none"> • Green signal lamp with button NC • Nickel plated brass for non armored cable M20 (option stainless steel). Option others metrics, other materials, for armored cable,...

CONTREX I072. RED SIGNAL LAMP WITH BUTTON NC



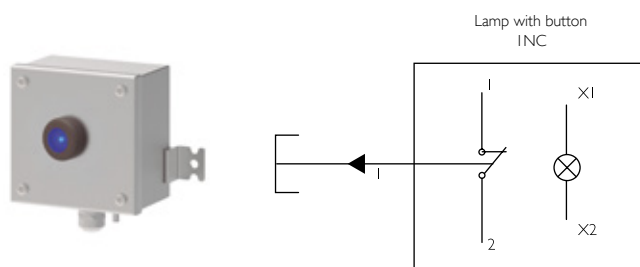
REFERENCE	CONTREX I072
SIZE	120x120x75 (option AISI304L and AISI316L)
IT CONTAINS	<ul style="list-style-type: none"> • Red signal lamp with button NC • Nickel plated brass for non armored cable M20 (option stainless steel). Option others metrics, other materials, for armored cable,...

CONTREX I073. YELLOW SIGNAL LAMP WITH BUTTON NC



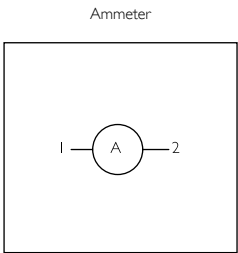
REFERENCE	CONTREX I073
SIZE	120x120x75 (option AISI304L and AISI316L)
IT CONTAINS	<ul style="list-style-type: none"> • Yellow signal lamp with button NC • Nickel plated brass for non armored cable M20 (option stainless steel). Option others metrics, other materials, for armored cable,...

CONTREX I074. BLUE SIGNAL LAMP WITH BUTTON NC



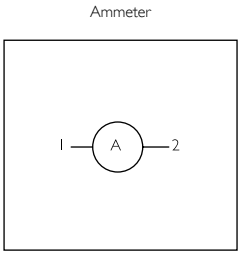
REFERENCE	CONTREX I074
SIZE	120x120x75 (option AISI304L and AISI316L)
IT CONTAINS	<ul style="list-style-type: none"> • Blue signal lamp with button NC • Nickel plated brass for non armored cable M20 (option stainless steel). Option others metrics, other materials, for armored cable,...

CONTREX I 100. AMMETER 1A



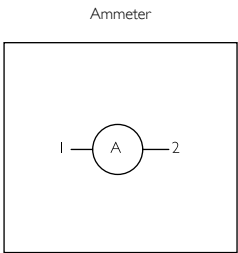
REFERENCE	CONTREX I 100
SIZE	120x120x75 (option AISI304L and AISI316L)
IT CONTAINS	<ul style="list-style-type: none">• Ammeter 1A• Nickel plated brass for non armored cable M20 (option stainless steel). Option others metrics, other materials, for armored cable,...

CONTREX I 101. AMMETER 4A



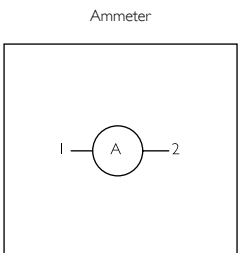
REFERENCE	CONTREX I 101
SIZE	120x120x75 (option AISI304L and AISI316L)
IT CONTAINS	<ul style="list-style-type: none">• Ammeter 4A• Nickel plated brass for non armored cable M20 (option stainless steel). Option others metrics, other materials, for armored cable,...

CONTREX I 102. AMMETER 5A



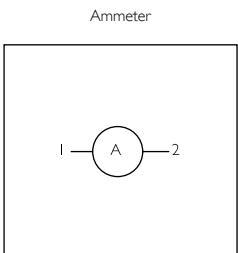
REFERENCE	CONTREX I 102
SIZE	120x120x75 (option AISI304L and AISI316L)
IT CONTAINS	<ul style="list-style-type: none">• Ammeter 5A• Nickel plated brass for non armored cable M20 (option stainless steel). Option others metrics, other materials, for armored cable,...

CONTREX I 103. AMMETER 10A



REFERENCE	CONTREX I 103
SIZE	120x120x75 (option AISI304L and AISI316L)
IT CONTAINS	<ul style="list-style-type: none">• Ammeter 10A• Nickel plated brass for non armored cable M20 (option stainless steel). Option others metrics, other materials, for armored cable,...

CONTREX I 104. AMMETER 15A

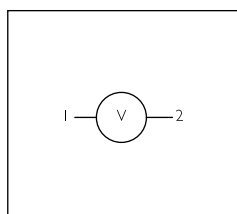


REFERENCE	CONTREX I 104
SIZE	120x120x75 (option AISI304L and AISI316L)
IT CONTAINS	<ul style="list-style-type: none">• Ammeter 15A• Nickel plated brass for non armored cable M20 (option stainless steel). Option others metrics, other materials, for armored cable,...

CONTREX I 200. VOLTMETER 25V



Voltmeter

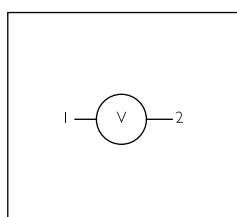


REFERENCE	CONTREX I 200
SIZE	120x120x75 (option AISI304L and AISI316L)
IT CONTAINS	<ul style="list-style-type: none"> • Voltmeter 25V • Nickel plated brass for non armored cable M20 (option stainless steel). Option others metrics, other materials, for armored cable,...

CONTREX I 201. VOLTMETER 40V



Voltmeter

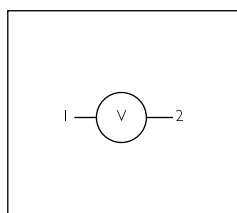


REFERENCE	CONTREX I 201
SIZE	120x120x75 (option AISI304L and AISI316L)
IT CONTAINS	<ul style="list-style-type: none"> • Voltmeter 40V • Nickel plated brass for non armored cable M20 (option stainless steel). Option others metrics, other materials, for armored cable,...

CONTREX I 202. VOLTMETER 150V



Voltmeter

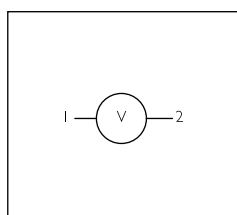


REFERENCE	CONTREX I 202
SIZE	120x120x75 (option AISI304L and AISI316L)
IT CONTAINS	<ul style="list-style-type: none"> • Voltmeter 150V • Nickel plated brass for non armored cable M20 (option stainless steel). Option others metrics, other materials, for armored cable,...

CONTREX I 203. VOLTMETER 250V



Voltmeter

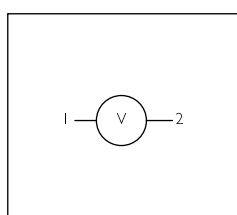


REFERENCE	CONTREX I 203
SIZE	120x120x75 (option AISI304L and AISI316L)
IT CONTAINS	<ul style="list-style-type: none"> • Voltmeter 250V • Nickel plated brass for non armored cable M20 (option stainless steel). Option others metrics, other materials, for armored cable,...

CONTREX I 204. VOLTMETER 500V

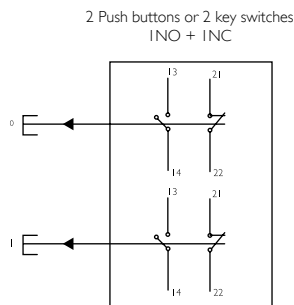
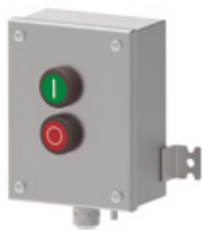


Voltmeter



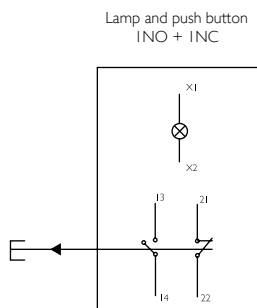
REFERENCE	CONTREX I 204
SIZE	120x120x75 (option AISI304L and AISI316L)
IT CONTAINS	<ul style="list-style-type: none"> • Voltmeter 500V • Nickel plated brass for non armored cable M20 (option stainless steel). Option others metrics, other materials, for armored cable,...

CONTREX2010. START PUSH BUTTON AND STOP PUSH BUTTON



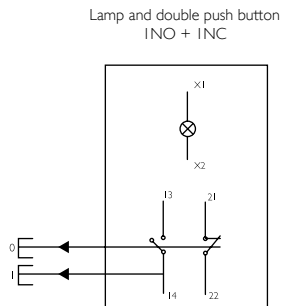
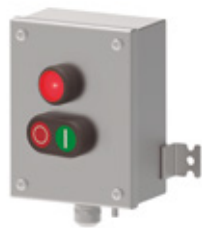
REFERENCE	CONTREX2010
SIZE	160x120x75 (option AISI304L and AISI316L)
IT CONTAINS	<ul style="list-style-type: none">Start push button NO + NCStop push button NO + NCNickel plated brass for non armored cable M20 (option stainless steel). Option others metrics, other materials, for armored cable,...

CONTREX2020. SIGNAL LAMP AND STOP PUSH BUTTON



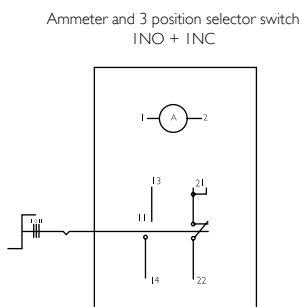
REFERENCE	CONTREX2020
SIZE	160x120x75 (option AISI304L and AISI316L)
IT CONTAINS	<ul style="list-style-type: none">Signal lampStop push button NO + NCNickel plated brass for non armored cable M20 (option stainless steel). Option others metrics, other materials, for armored cable,...

CONTREX2030. SIGNAL LAMP AND DOUBLE PUSH BUTTON



REFERENCE	CONTREX2030
SIZE	160x120x75 (option AISI304L and AISI316L)
IT CONTAINS	<ul style="list-style-type: none">Signal lampDouble push button NO + NCNickel plated brass for non armored cable M20 (option stainless steel). Option others metrics, other materials, for armored cable,...

CONTREX2100. AMMETER AND 3 POSITION SELECTOR SWITCH



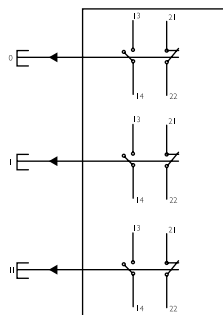
REFERENCE	CONTREX2100
SIZE	190x130x75 (option AISI304L and AISI316L)
IT CONTAINS	<ul style="list-style-type: none">Ammeter 5A3 position selector switch NC + NONickel plated brass for non armored cable M20 (option stainless steel). Option others metrics, other materials, for armored cable,...

PRE-ASSEMBLED STAINLESS STEEL CONTROL BOXES **CONTREX-GEOEX SERIES** IP66

CONTREX3010. 3 BUTTONS



3 Push buttons
or 3 key switches
INO + INC

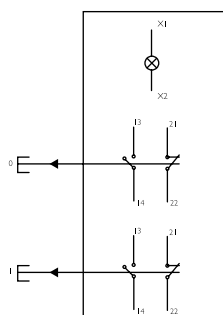


REFERENCE	CONTREX3010
SIZE	210x120x75 (option AISI304L and AISI316L)
IT CONTAINS	<ul style="list-style-type: none"> • Start push button NO + NC • Stop push button NO + NC • Red button NC + NO • Nickel plated brass for non armored cable M20 (option stainless steel). Option others metrics, other materials, for armored cable,...

CONTREX3020. SIGNAL LAMP, START PUSH BUTTON AND STOP PUSH BUTTON



Lamp
and 2 push buttons
or key switches
INO + INC

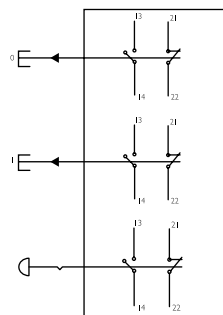


REFERENCE	CONTREX3020
SIZE	210x120x75 (option AISI304L and AISI316L)
IT CONTAINS	<ul style="list-style-type: none"> • Red signal lamp • Start push button NO + NC • Stop push button NO + NC • Nickel plated brass for non armored cable M20 (option stainless steel). Option others metrics, other materials, for armored cable,...

CONTREX3030. START PUSH BUTTON, STOP PUSH BUTTON AND EMERGENCY STOP BUTTON



2 Push buttons
or key switches
and emergency stop
INO + INC

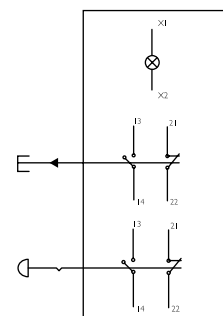


REFERENCE	CONTREX3030
SIZE	210x120x75 (option AISI304L and AISI316L)
IT CONTAINS	<ul style="list-style-type: none"> • Start push button NO + NC • Stop push button NO + NC • Emergency stop button NC + NO • Nickel plated brass for non armored cable M20 (option stainless steel). Option others metrics, other materials, for armored cable,...

CONTREX3040. SIGNAL LAMP, STOP PUSH BUTTON AND EMERGENCY STOP BUTTON



Lamp, push buttons
or key switch
and emergency stop
INO + INC

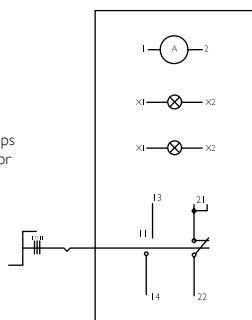


REFERENCE	CONTREX3040
SIZE	210x120x75 (option AISI304L and AISI316L)
IT CONTAINS	<ul style="list-style-type: none"> • Red signal lamp • Stop push button NO + NC • Emergency stop button NC + NO • Nickel plated brass for non armored cable M20 (option stainless steel). Option others metrics, other materials, for armored cable,...

CONTREX 4010. AMMETER, 2 SIGNAL LAMPS AND 3 POSITION SELECTOR SWITCH



Ammeter, 2 signal lamps
and 3 position selector
switch
INO + INC

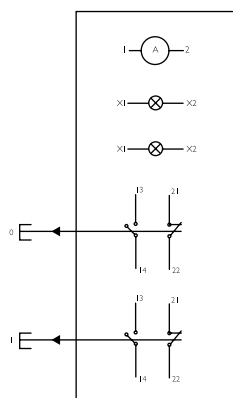


REFERENCE	CONTREX 4010
SIZE	300x200x75 (option AISI304L and AISI316L)
IT CONTAINS	<ul style="list-style-type: none"> • Ammeter 5A • Green signal lamp • Red signal lamp • 3 position selector switch NC + NO • Nickel plated brass for non armored cable M20 (option stainless steel). Option others metrics, other materials, for armored cable,...

CONTREX 4020. AMMETER, 2 SIGNAL LAMPS, START PUSH BUTTON AND STOP PUSH BUTTON



Ammeter, 2 signal lamps
and 2 push buttons
INO + INC

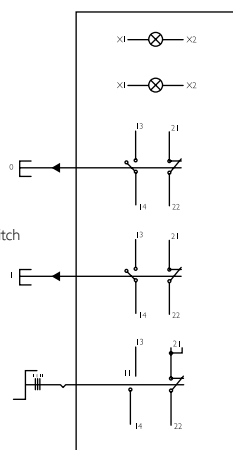


REFERENCE	CONTREX 4020
SIZE	300x200x75 (option AISI304L and AISI316L)
IT CONTAINS	<ul style="list-style-type: none"> • Ammeter 5A • Green signal lamp • Red signal lamp • Start push button NO + NC • Stop push button NO + NC • Nickel plated brass for non armored cable M20 (option stainless steel). Option others metrics, other materials, for armored cable,...

CONTREX 4030. 2 SIGNAL LAMPS, START PUSH BUTTON, STOP PUSH BUTTON AND 3 POSITION SELECTOR SWITCH



2 Signal lamps,
2 push buttons
and 3 position selector switch
INO + INC



REFERENCE	CONTREX 4030
SIZE	300x200x75 (option AISI304L and AISI316L)
IT CONTAINS	<ul style="list-style-type: none"> • Green signal lamp • Red signal lamp • Start push button NO + NC • Stop push button NO + NC • 3 position selector switch NC + NO • Nickel plated brass for non armored cable M20 (option stainless steel). Option others metrics, other materials, for armored cable,...

SOLUTIONS FOR HAZARDOUS AREA



With over 50 years of experience in design, manufacture and supply of electrical high quality Atex & IECEx solutions

Atex Delvalle adapts to our clients' needs by offering Hazardous Area enclosures and boxes on demand. They are adapted to your specific requirements of installation and assembly, up to the last detail.

Atex Delvalle designs and manufactures a range of Hazardous Area enclosures; junction and terminal boxes, pressurized, flameproof Ex d and increased Safety Ex e Atex & IECEx compliant enclosures.



ATEX CABLE GLANDS



MOTOR STARTER & LOAD
DISCONNECT SWITCHES



ATEX TERMINAL
& JUNCTION BOXES



ATEX LIGHTING FIXTURE



FLAMEPROOF ENCLOSURES & PULLING BOXES

HMI INDUSTRIAL PANELS WORKSTATIONS



CONTROL STATIONS & DISTRIBUTION BOXES

Atex control boxes (Contrex Series), they are specially designed to perform checks, maneuvers and as actuators in explosive atmospheres. They have a rugged, corrosion system and finished in stainless steel or GRP polyester. It allows you to perform maneuvers and controls at the machine in hazardous areas and take programming and automation in a safe area. Offering customers a great combination of possibilities and flexibility. Select the component that best suits your operator panels, keypads, mushrooms, switches, ammeters... and you assemble all with Atex certified, Ex & IECEx and UL.



ENCLOSURES FOR CORROSION ENVIRONMENTS

PRESSURIZED PANELS & ATEX PURGE





HAZARDOUS AREA SOLUTIONS ATEX & IECEx



Paso del Prao, 6. 01320 Oyón (Álava), Spain
Phone +34 945 601 381
atex@atexdelvalle.com | www.atexdelvalle.com

Contact us, we will be available at any time